



WINDSOR ARTS COMMISSION REGULAR MEETING

September 16, 2025 - 6:00 PM

Windsor Art & Heritage Center, 116 5th Street, Windsor, CO 80550

AGENDA

A. CALL TO ORDER

1. Roll Call
2. Review of Agenda by the Board and Addition of Items of New Business to the Agenda for Consideration
3. Public Invited to be Heard

B. CONSENT CALENDAR

1. Approval of August Meeting Minutes
2. Acceptance of Financial Report

C. BOARD ACTION

1. Selection of Artist for Community Development Sculpture

D. DISCUSSION ITEMS

1. Windsor History Museum Train Depot Mural

E. COMMUNICATIONS

1. Communications from Town Board
2. Communications from Town of Windsor Staff
3. Communications from WAC Members

F. ADJOURN

The Town of Windsor will make reasonable accommodations for access to Town services, programs, and activities and will make special communication arrangements for persons with disabilities. Please call (970) 674-2400 by noon on the Thursday prior to the meeting to make arrangements.



WINDSOR ARTS COMMISSION REGULAR MEETING

August 19, 2025 - 6:00 PM

Art and Heritage Center, 116 5th St, Windsor, CO 80550

MINUTES

A. CALL TO ORDER- 6:00 PM

1. Roll Call – WAC Members- Laurie Bess, Carol Clark, Shelley Kawamura, Carrie Ferris, Emily Pearson, Via Zoom - Kelly Sharlau, Tiffany Elliot, Absent -Todd Vess
also in attendance, Laura Browarny - Liaison, Chris Bates -Liaison, Ken Symsack- Liaison,
2. Review of Agenda by the Board and Addition of Items of New Business to the Agenda for Consideration - Move to Approve by Emily Pearson, seconded by Shelley Kawamura, unanimously approved.
3. Public Invited to be Heard – None.

B. CONSENT CALENDAR

1. Approval of April Minutes - Approve and amend the July minutes to remove Shelley Kawamura from the roll call, moved by Emily Pearson, Seconded by Laurie Bess, Unanimous Approval
2. Approval of Financial Report - Moved to approve by Emily Pearson, Seconded by Laurie Bess, Unanimous Approval

C. BOARD ACTION

1. Approval of the design for the Mural Grant Project at Hayden Outdoors, located at 501 Main St. Dominique Montano sent in her design for approval. After approval the next step is to attend the WDA meeting on 8/20 to acquire the matching grant. Move to approve this mural design, Shelley Kawamura, seconded by Carrie Nutt, unanimously approved.
2. Vote to Approve the design for the Mural Grant Project at Happi Yogi, located at 117 N. 6th St. Artist Chelsea Ermer presented her design in person. The next step after approval is to attend the WDA meeting on 8/20 to acquire the matching grant. Chelsea would like Laura to email her a sample contract that she can use for the project. Move to approve Shelley Kawamura, seconded by Carrie Nutt, unanimously approved.
3. Approval of sculpture design for Farm Equipment Sculpture Project by Paul Lippart. Paul presented the board with his concept to create a 6-8' tall rooster. Move to Approve by Emily Pearson, seconded by Shelley Kawamura, unanimously approved

D. DISCUSSION ITEMS

1. Future meetings and events – We are holding a special meeting to review the ComDev Sculpture Project presentation on September 9th at 6pm. This will be located at the Community Development Building, located at 200 N. 11th St., Windsor, CO 80550.
2. August 30th WAC will be attending the Farmers Market from 9-12pm to talk about the SoL of Windsor and Chris will be giving hourly tours.
3. September 6th will be the last ArtLive! of the season. Print maker Tony Pinedo will be at the Farmers Market from 10-12.

E. COMMUNICATIONS

1. Town Board Communications- Ken Symsack- Town Board is doing work and that work is good.
2. Town Staff Communications- Chris says sculptures for the SoL of Windsor are in and he is going to bed. Laura says that art is good and WAC is great.

F. ADJOURN – 6:49 - Move to Approve by Laurie Bess, seconded by Carol Clark, unanimously approved

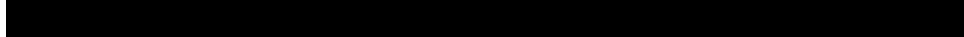
Respectfully Submitted:

The Town of Windsor will make reasonable accommodations for access to Town services, programs, and activities and will make special communication arrangements for persons with disabilities. Please call (970) 674-2400 by noon on the Thursday prior to the meeting to make arrangements.

Community Devo.

General Fund (205)

2025 Budget **\$100,000** **\$24,330**



Concrete for Kyger (en	\$8,625	
SWAG		\$631
CaFE Subscription		\$120
CaFE Call - SoL		\$250
Traffic Box Mural (encu	\$1,750	
Farm Equipment (encu	\$15,000	
Art LIVE 6/14		\$250
Final Kyger Payment	\$31,000	
SWAG		\$918
Art LIVE 6/20		\$500
SoL concrete 50%	\$5,100	
Art LIVE 7/12		\$300
SoL steel plates	\$1,050	
SWAG		\$1,170
Bronze Maintenance		\$565
CaFE Call - Comm Dev		\$250
SoL concrete 50%	\$5,100	
SoL artist fees	\$10,800	
Mural grants (encumb	\$10,000	
Art LIVE 8/9		\$400
Artist stipends		\$600
Art LIVE 9/6		\$375
Pelican Repairs	\$6,500	
Total Spent	\$94,925	\$6,329
Remaining Budget	\$19,612	\$18,001



IAN HOUGHTON

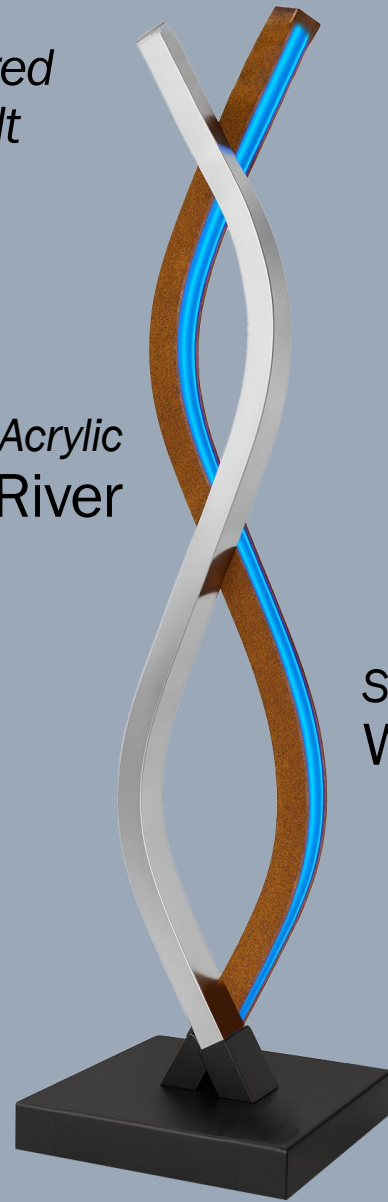


Flowform

WINDSOR COMMUNITY DEVELOPMENT BUILDING

Flowform is a bold 18-foot-tall sculpture inspired by the spirit of Windsor; rooted in nature & built by design.

CorTen Steel inlayed with Blue Acrylic
The Cache la Poudre River



Stainless Steel inlayed with Blue Acrylic
Windsor's waterways & infrastructure

FLOWFORM SIGNIFICANCE

Powder coated or rusted corten Steel

Stainless Steel

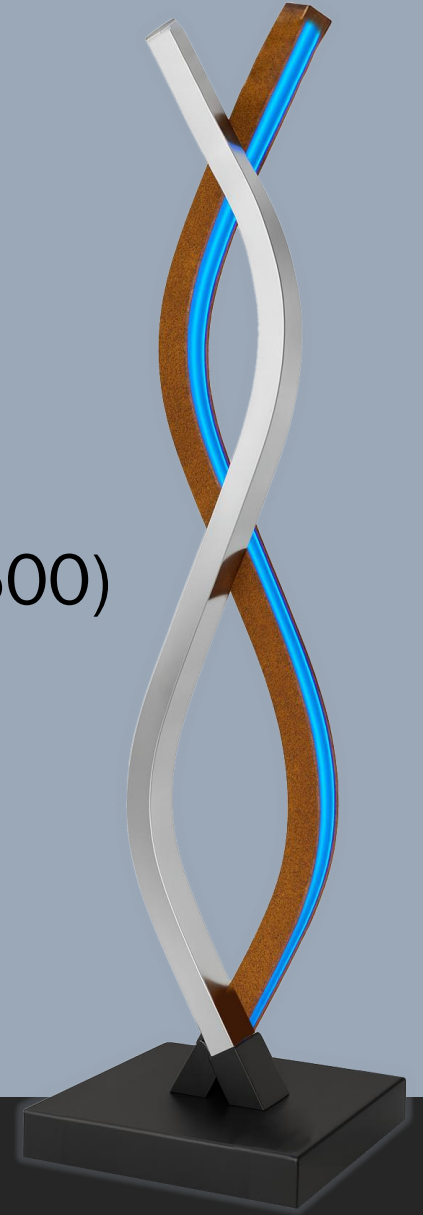
Acrylic & Lighting

General cleaning (2-3 years)

Electrical inspection/general maintenance (5 years)

Light sensor and Electrical control replacement (10 years - \$1,500)

Replace Acrylic (10-20 years - \$5,000)



3 months

- 12 weeks for fabrication
- 2 weeks for powder coat
- 1 week for installation

*not including permitting, foundation/site prep & other related time constraints

\$25,000	Materials (Steel for major forms, Acrylic & Lighting/Electrical)
\$10,000	Labor
\$5,000	Consumables
\$2,500	Powder coating
\$4,500	Equipment rental (Telehandler for installation, trailers)
\$3,500	Engineering
\$5,000	Concrete
\$15,000	Artist Fee
\$4,500	*Contingencies
\$75,000	Total



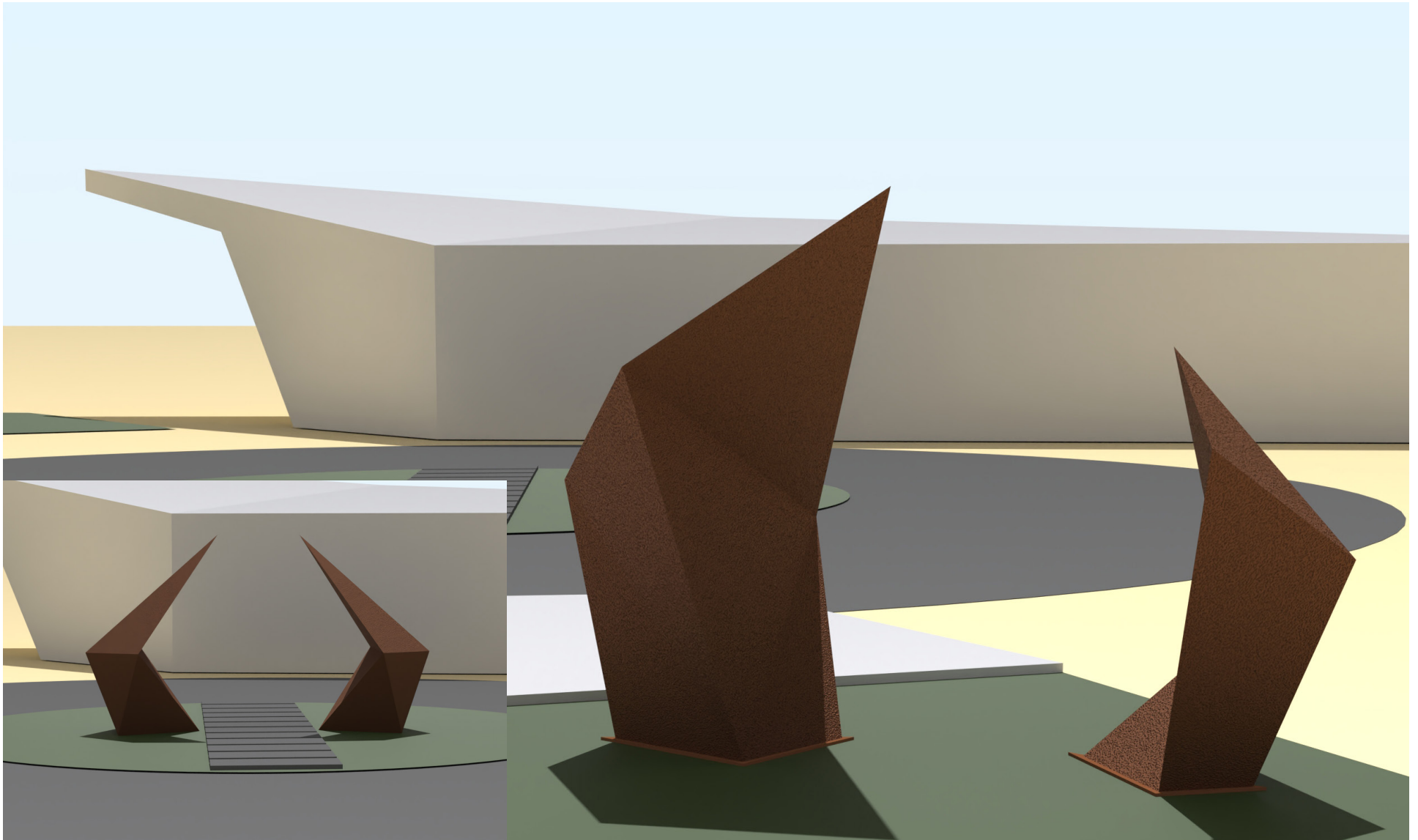
Sculpture location factors:

- Reinforced concrete base
- Electrical (existing power supply or solar)



ADDITIONAL INFRASTRUCTURE

Windsor "Flume" Gate



Concept/Inspiration

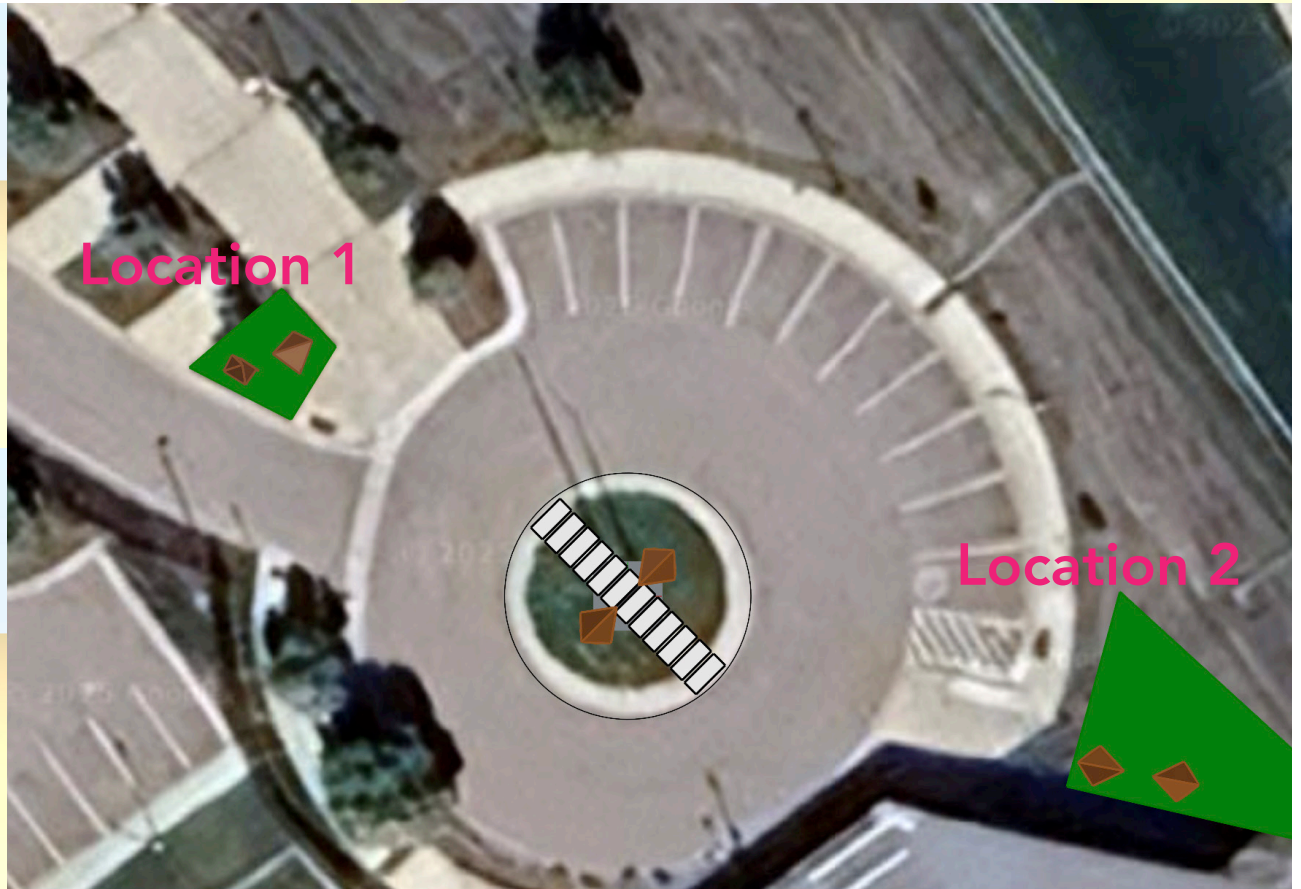
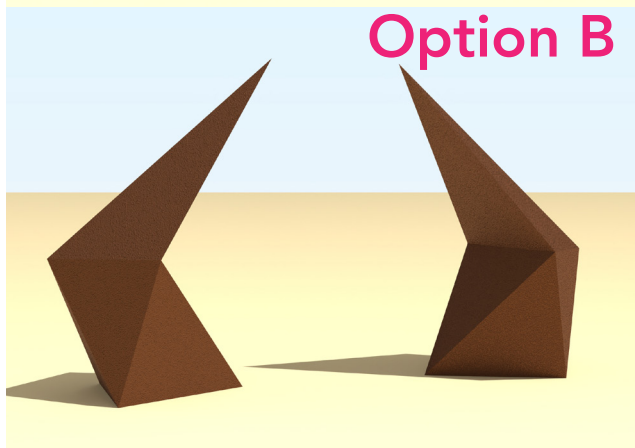
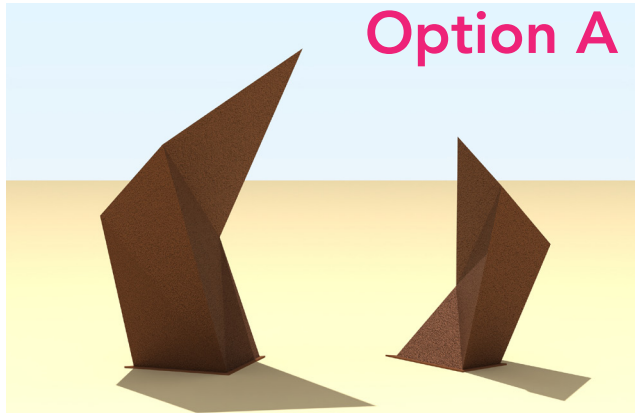
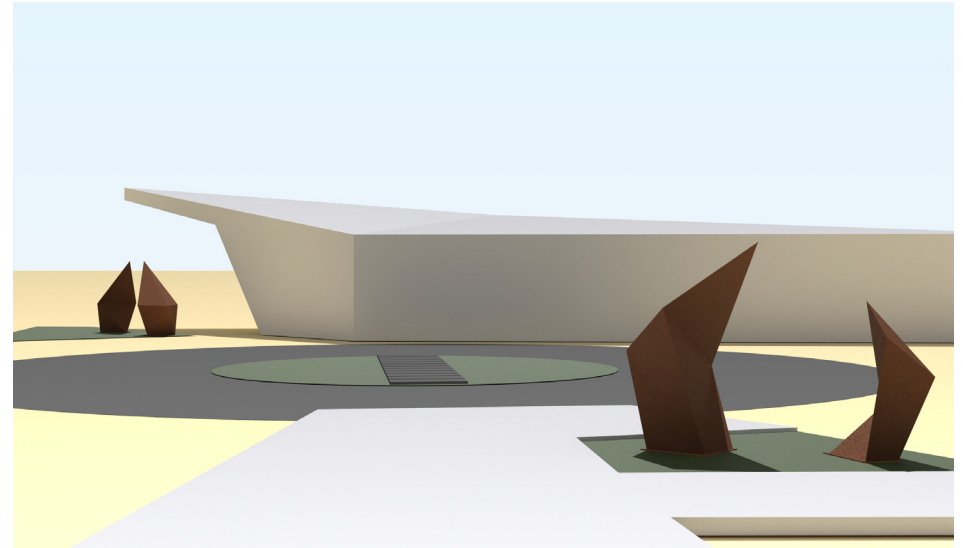
Gateways embody transition — moments of discovery, self-reflection, and connection. They mark a passage, a pause in a wall or fence, a break in structure that becomes an opening and a way through.

While my work is often described as abstract, I view these sculptures not as abstractions but as unique forms, original creations that possess their own distinct presence. For this series, the forms are inspired by both the architectural character of the site and by Windsor's history of irrigation flumes — channels that once carried water across the landscape and transformed it into fertile ground. Much like those flumes, these sculptural gateways guide movement and flow, offering pathways that connect past and present, place and community.



Options and Locations:

I started working on Option B. for one of the original sites, which was offered in the center of the circular parkign area. After this was removed as a potential location I started working on Option A. Option A was designed with with Location 1 in mind, however I believe either sculpture would work well in Location 2.



Location 1

Option A



Location 2

Option A

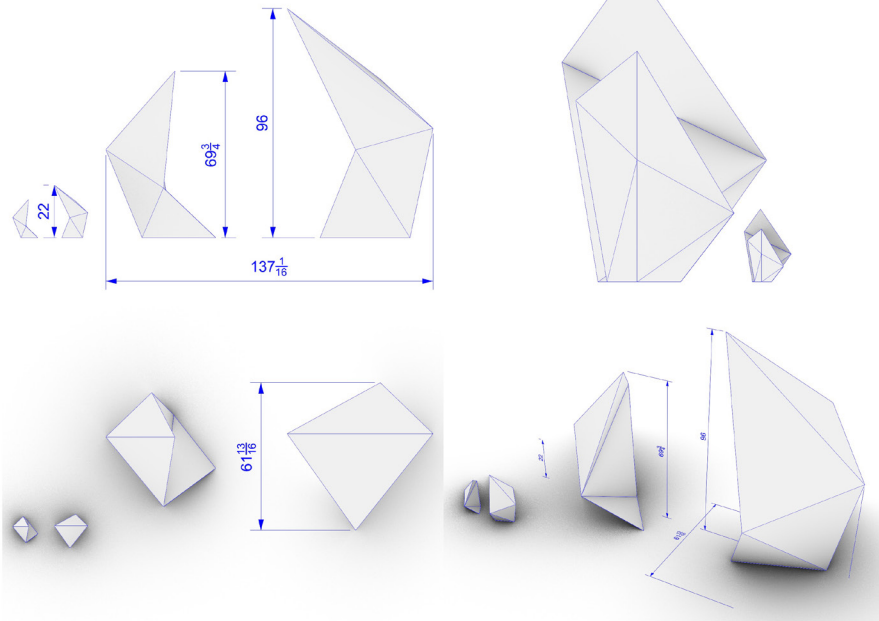


Location 2

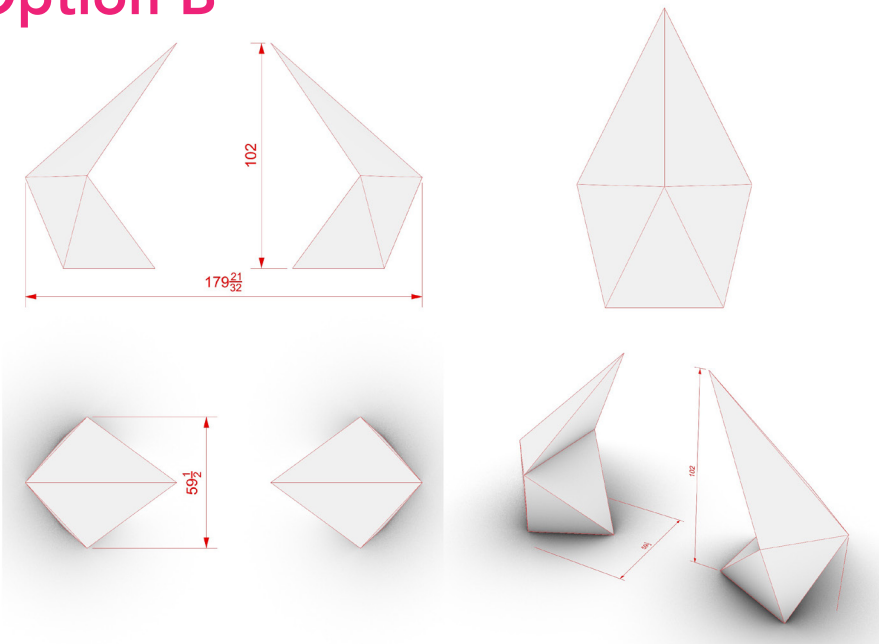
Option B



Option A



Option B



Details

Material Choice:

12 gauge (0.10") Cor-ten weathering steel. No maintenance required, impervious to weather.

Dimensions and Weight:

Please see diagram to left for exact dimensions. Approximate weights; Option A. 500lbs and Option B. 650lbs

Budget breakdown:

\$15,000 consumables, materials, programming and processing
\$50,000 project management, design, fabrication and finishing
\$5,000 concrete bases
\$2,500 travel, delivery and installation
\$2,500 contingency for labor, concrete, misc.

Timeline for fabrication and install of sculpture:

2-3 months for design review, purchase and processing of materials

3-5 months for fabrication and finishing of sculpture and supervision of concrete base installation

Realistic target date for installation May 2026



PUBLIC ART

for the Windsor Community Development Building
Artist: Volkan Alkanoglu

CONCEPT AND INSPIRATION

I propose 'Current', a futuristic, 3-dimensional fiberglass sculpture that reflects Windsor's rich water heritage, advanced infrastructure, and ongoing efforts in planning and engineering.

Designed specifically for the newly renovated Community Development building, 'Current' is both a symbolic and interactive landmark that celebrates the convergence of nature and innovation.

The sculpture takes the form of a fluid, looping structure, seemingly frozen in motion, that evokes the dynamic flow of the Cache la Poudre River and the complex irrigation networks that shape Windsor's past and present. In essence, the sculpture merges natural dynamic forms with engineering precision.



Made from lightweight, high-performance fiberglass with a pearlescent finish, the piece shimmers in natural light and shifts in color depending on the viewer's angle, creating a sense of movement, transformation, and forward progress.

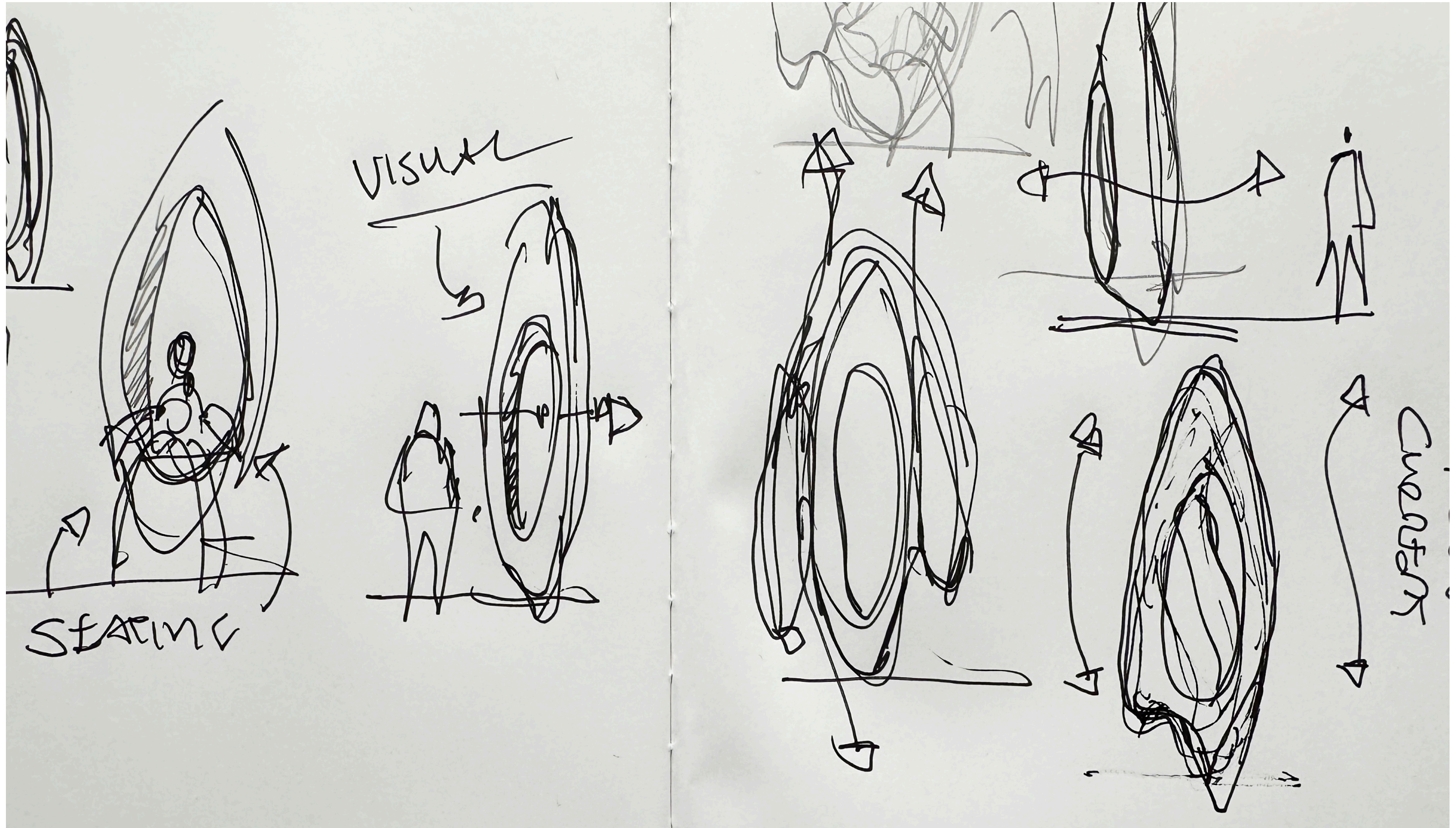
Standing approximately 12 feet tall and anchored safely within a plaza space near the entrance, 'Current' is scaled to invite gathering and interaction, encouraging visitors to walk around, touch, and even sit along its lower arcs.

It not only reflects the collaborative spirit of Windsor's Planning, Water, and Engineering departments but becomes an aspirational icon of how infrastructure and environment come together to shape the future.



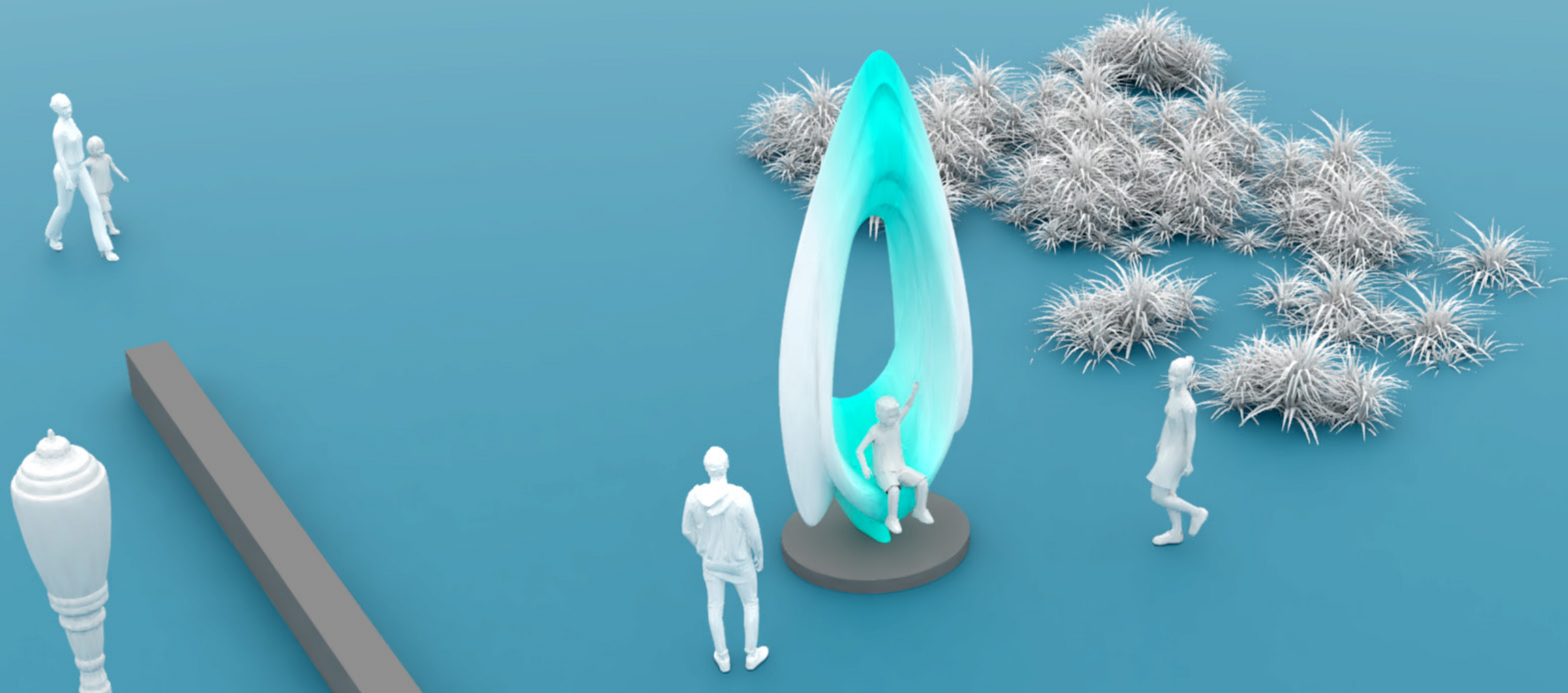
CURRENT



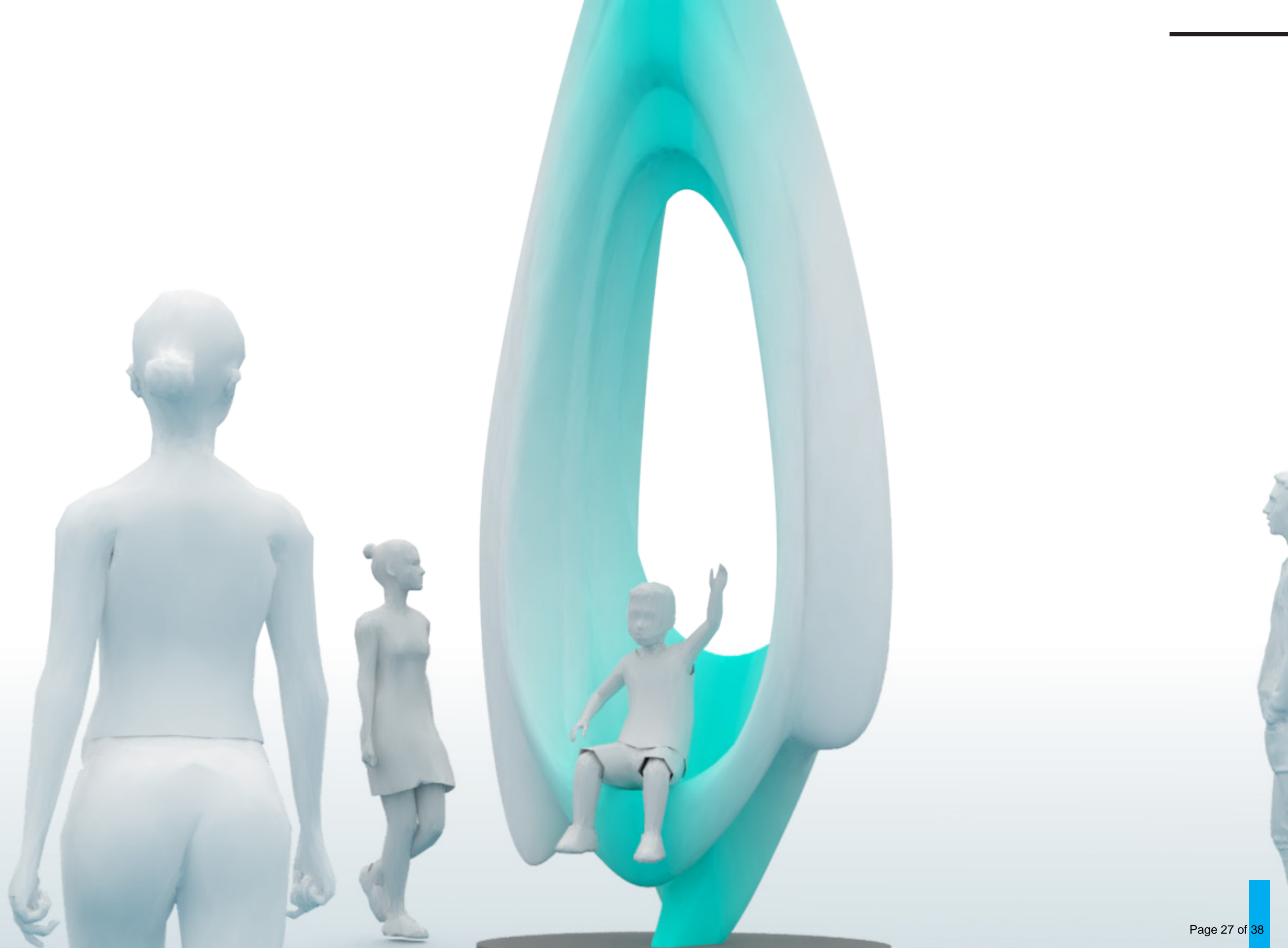


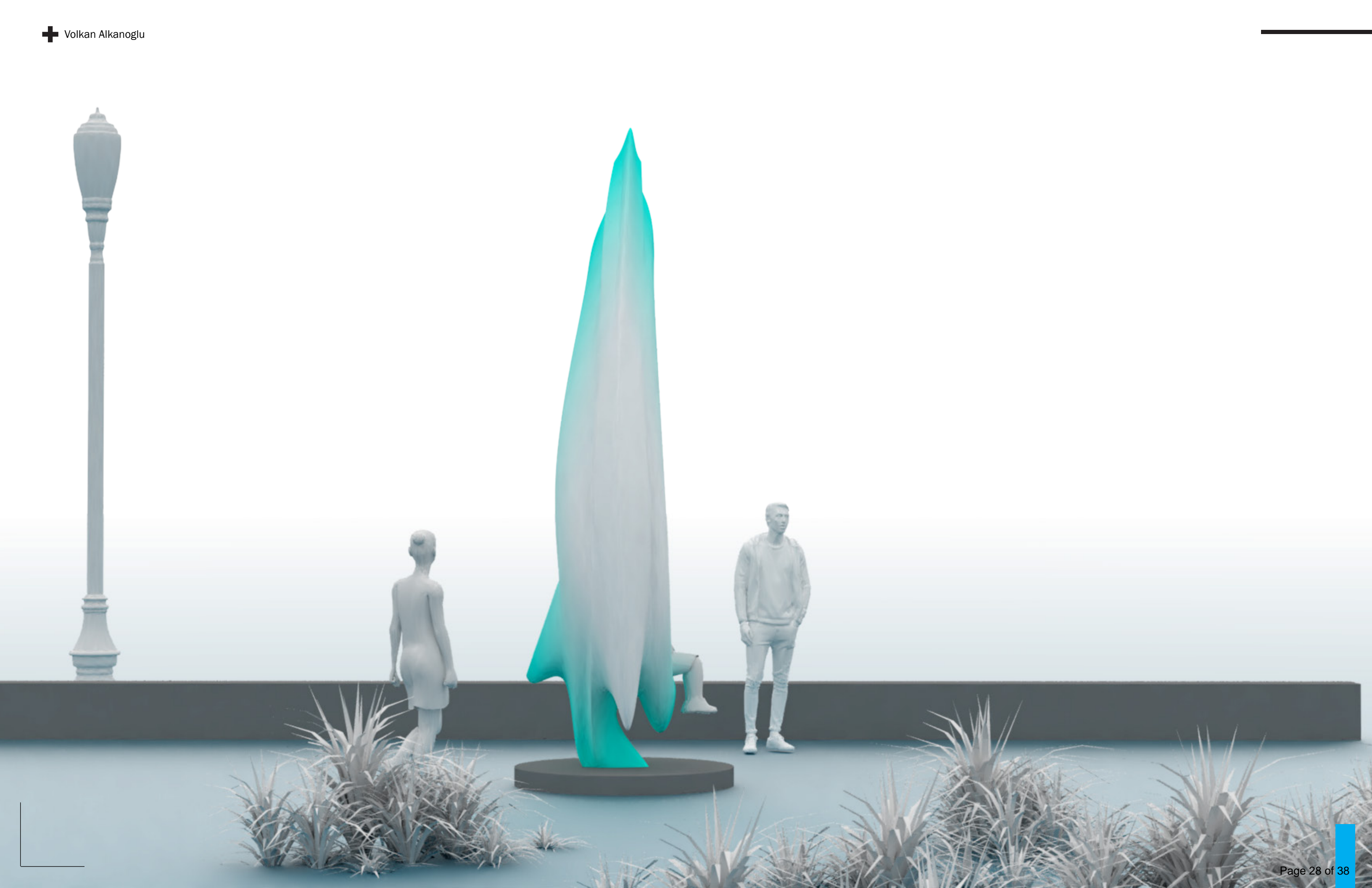
CONCEPT SKETCHES



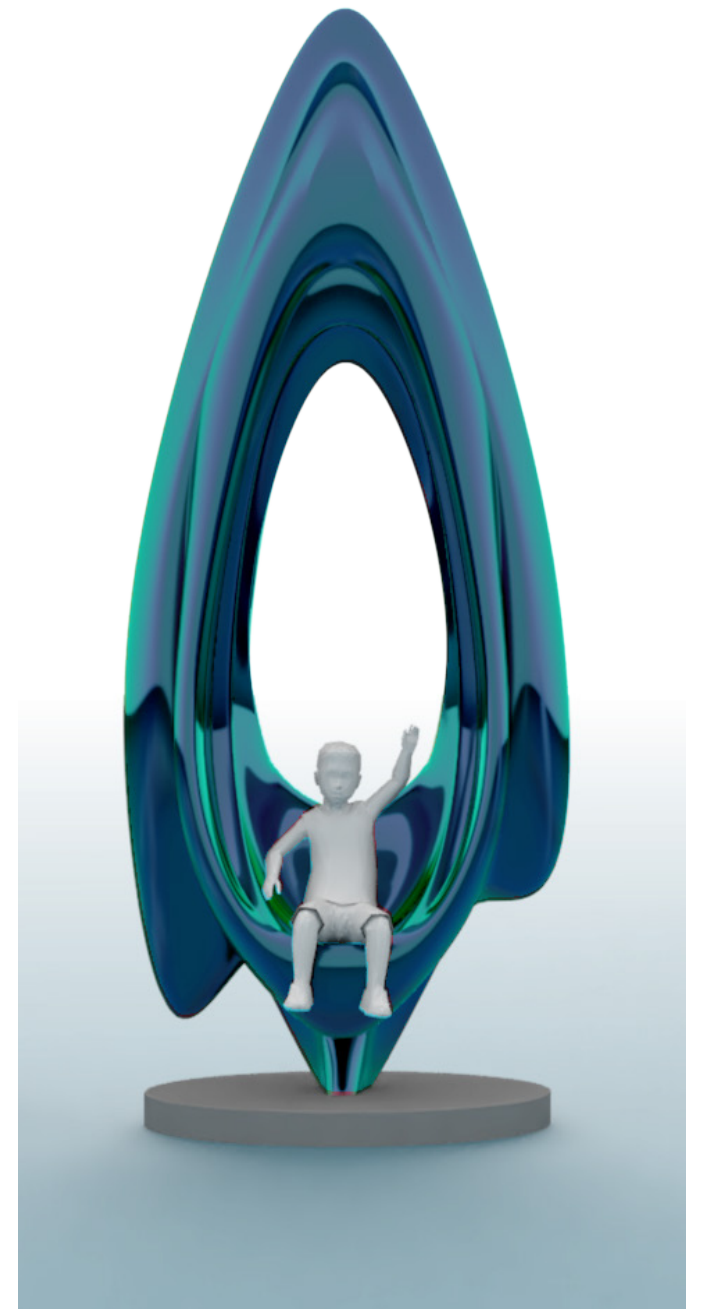
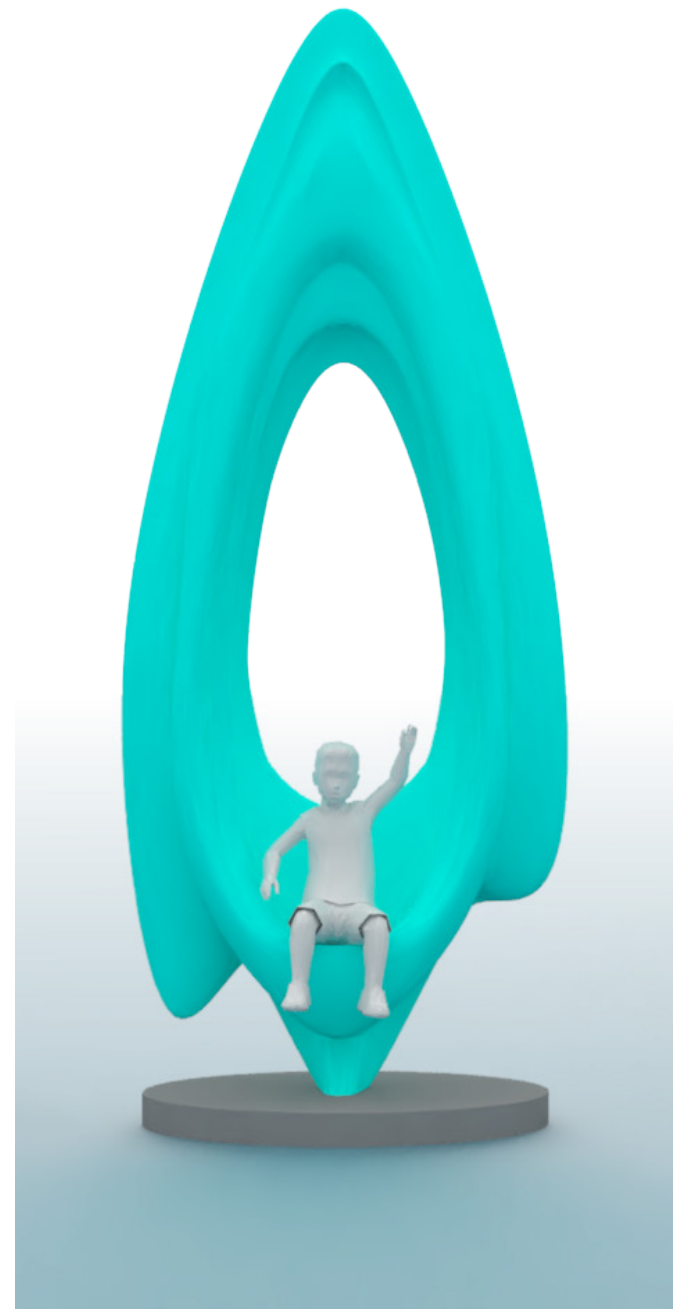
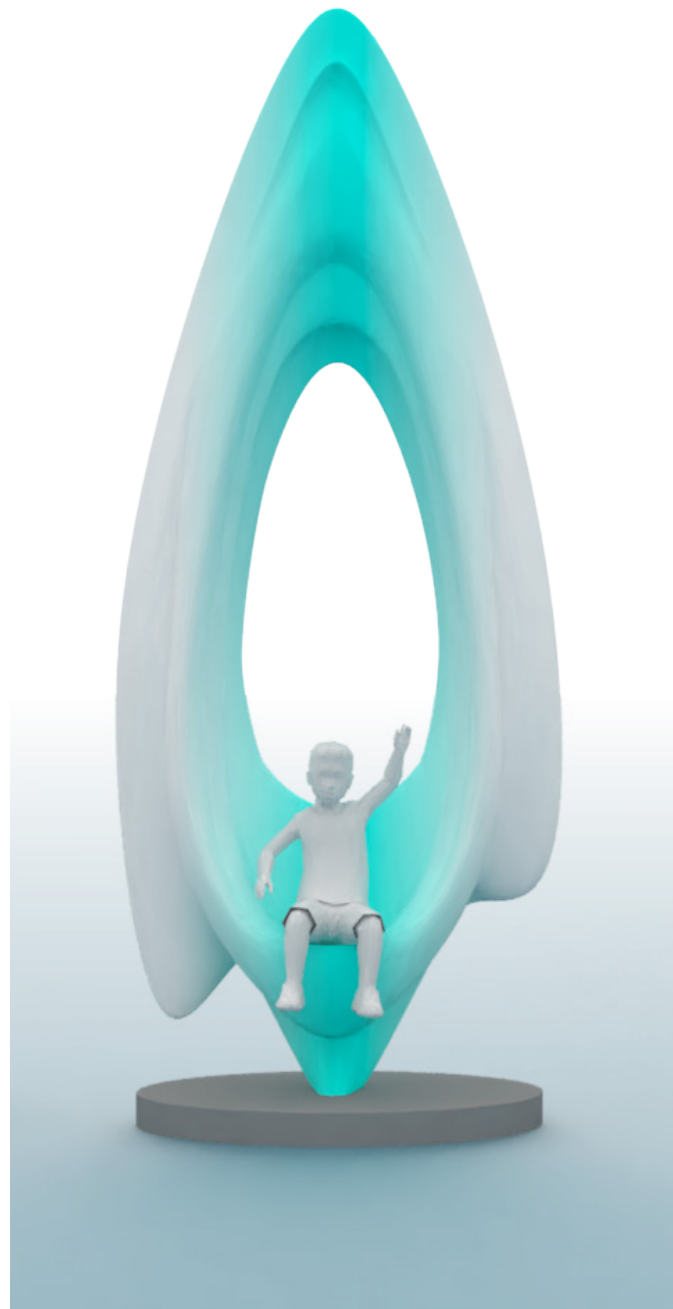












COLOR OPTIONS

MATERIAL & MAINTENANCE

The use of fiberglass with a protective resin coating for this accessible sculpture offers enhanced durability and safety, making it an ideal choice for outdoor environments. Fiberglass, already known for its high strength-to-weight ratio, becomes even more resilient when combined with a protective resin coating. This coating provides an additional layer of protection against environmental stressors such as UV radiation, moisture, and temperature extremes. The resin coating also enhances the material's resistance to impacts and abrasions, ensuring that the play structures can withstand the rigors of active play and harsh weather conditions without deteriorating. This combination allows for the creation of vibrant, intricate designs that remain intact and visually appealing over time. The interior of the artwork will be constructed out of a stainless steel frame.

In terms of maintenance, fiberglass structures with a protective resin coating are exceptionally low-maintenance.

The smooth, non-porous surface of the resin-coated fiberglass prevents the accumulation of dirt, mold, and mildew, reducing the need for frequent cleaning. When cleaning is necessary, a simple wash with mild soap and water is usually sufficient to restore the structures to their original condition. Additionally, the protective resin coating minimizes the risk of scratches and chips, and any minor damage that does occur can be easily repaired with readily available repair kits. This ease of maintenance, coupled with the material's long-lasting durability, makes fiberglass with a protective resin coating a practical and cost-effective solution for creating safe, engaging, and enduring environments for the public realm.

The art work will be fully engineered by a registered structural engineer who will also design the concrete foundation upon which the piece will be fixed to.



BUDGET

The available budget for the project is \$75,000 USD. Our design proposal is projected to stay within the margin of this benchmark due to our innovative fabrication techniques, our collaborative nature, our previous experience in construction, our project management record of similar projects and full understanding of project logistic. We have attached a breakdown and basic cost estimate.

1. Fabrication 34%
2. Materials 33%
3. Painting 7%
4. Transportation 4%
5. Installation 10%
6. Design and Engineering 12%

1. Fabrication including but not limited to the following items: Material, labour, CNC, fabrication, welding, hardware
2. Materials including but not limited to the following items: Material, labour, cleaning, degreasing, assembly, storage, tools
3. Painting including but not limited to the following items: Paint labour, paint, coating process, primer, cleaning
4. Transportation including but not limited to the following items: Material, labour, supplies, protect, packaging, shipping, receiving, storage, coordination
5. Installation including but not limited to the following items: Labour, supplies, scaffolding, equipment, assembly, permits
6. Design & Engineering including but not limited to the following items: Artist fee, consultant fee, overhead, engineering, permits, prototype, scale models, presentation material, communication, services, insurance



RESUME

Volkan Alkanoglu is an artist and designer based in Portland, Oregon and founding principal of VA | DESIGN LLC. His creative focus revolves around the exploration of innovative forms through spatial, material, and technological avenues.

Challenging established architectural norms, he engages in public design interventions as part of his mission to reshape the built environment. To achieve this transformation, he employs cutting-edge digital techniques, pioneering methods of construction, and sustainable material systems, such as large-scale 3D printing.

Before establishing VA | DESIGN, Volkan Alkanoglu gained experience at Future Systems in London and Asymptote Architecture in New York.

He holds a Master of Architecture from the Bartlett School of Architecture, UC London,

UK, and a Diploma in Architecture from the Peter Behrens School in Düsseldorf, Germany. Volkan Alkanoglu is a LEED Accredited Professional in the USA and held registrations as an architect in Germany and the United Kingdom.

His recent projects have been implemented in various U.S. metropolitan areas, including Seattle, Portland, Los Angeles, Boston, New York, Baltimore, Miami, Atlanta, Denver, Dallas, and Washington D.C.

In the academic realm, Volkan Alkanoglu has shared his expertise, teaching at institutions such as the Architectural Association in London, UPenn in Philadelphia, and serving as the Director for Graduate Studies at the Georgia Institute of Technology in Atlanta, GA.

He has also been part of the design faculty at SCI-Arc in Los Angeles, CA, and Harvard University, Graduate School of Design in Cambridge, MA.



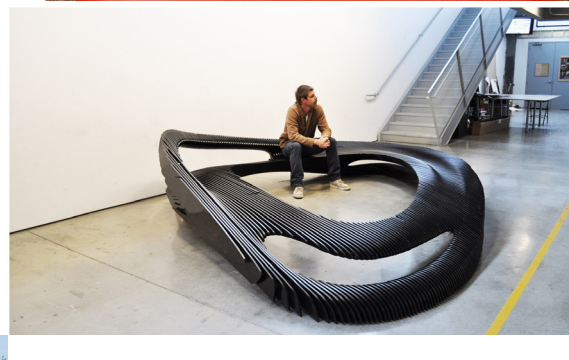
REFERENCES

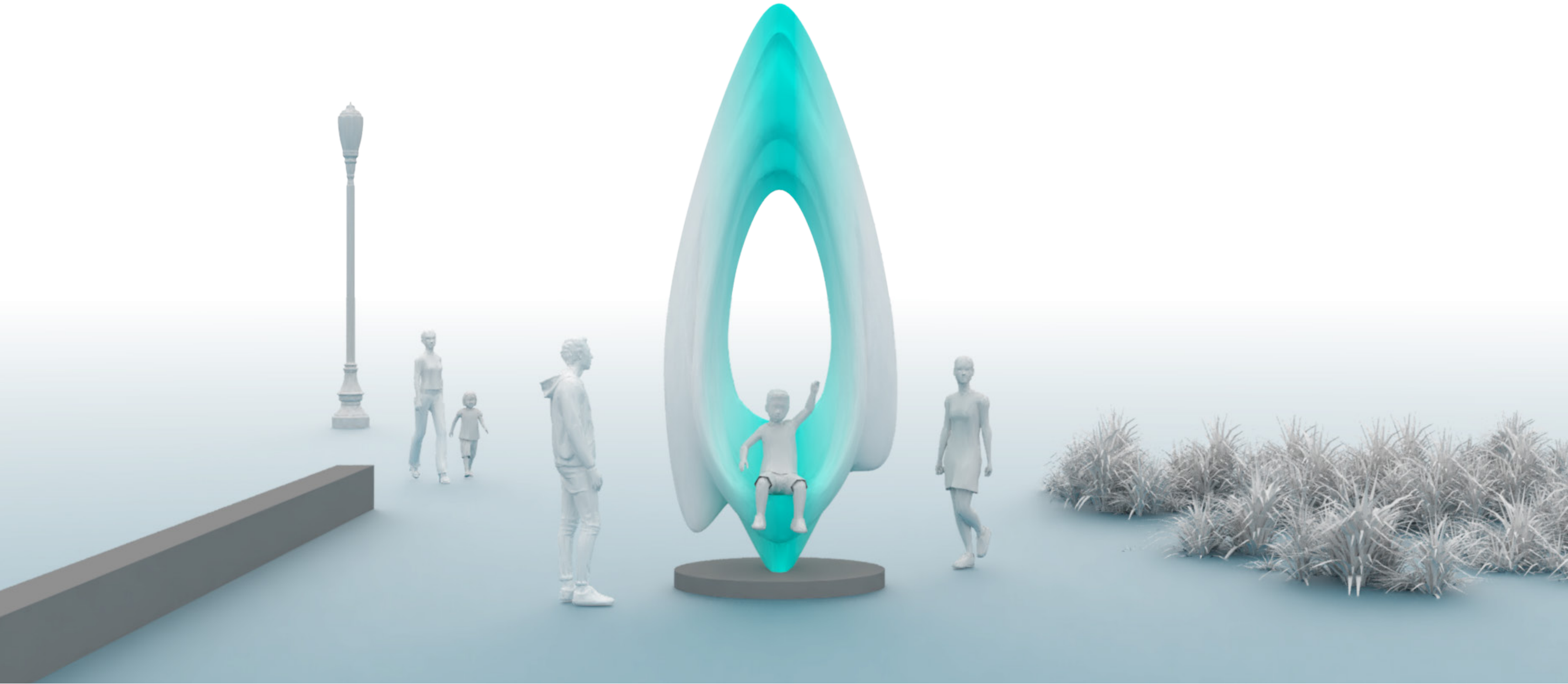
Project: 'Cloud Scape' in Fort Lauderdale, FL
Client Contact: Christina Roldan
Public Art Project Manager
Broward Cultural Division
200 S Andrews Ave
Fort Lauderdale, FL 33301
Phone: (954) 357-8542
Email: croidan@broward.org

Project: 'Inflight' in Baltimore, MD
Client Contact: Liesel Fenner
Public Art Program Director
Maryland State Arts Council
175 W. Ostend Street, Suite E
Baltimore, MD 21230
Phone: (410) 767-6494
Email: liesel.fenner@maryland.org

Project: 'Drift Bridge' in Fort Worth, TX
Client Contact: Anne Allen
Public Art Project Manager
Arts Council of Fort Worth
1300 Gendy Street
Fort Worth, Texas 76107
Phone: (817) 298-3028
Email: allen@artscouncilfw.org







THANK YOU

CONTACT

Volkan Alkanoglu DESIGN LLC
135 NW 9th Ave
Unit 814
Portland, OR 97209
Phone: (857) 654-4126
Email: volkan@alkanoglu.com

Call for Proposals for a Mural at the Windsor History Museum Train Depot

Project Description

The Town of Windsor Museums is completing renovations in the Train Depot at the Windsor History Museum in preparation for the 50th anniversary of when the Depot was relocated to its current spot and transformed into a museum. Museum staff are accepting proposals for a mural in the entryway of the Depot. The aim of this project is to create an art piece to welcome visitors into the museum. The mural should be historically accurate, utilize a style similar to [WPA murals of the 30s](#), and inspired by the historical photos provided.

The mural area is roughly 75 square feet and will require a ladder to reach. The budget for this project is \$3,000.

Artists are asked to submit this form including 3-6 images of past work, a resume, and a brief description of your interest and how they will approach to this project.

Town of Windsor Culture Division Staff will review applications the second week of November and will inform artists of their decision by December 1st.

Project Timeline

December 1 - Artist is notified and will begin design.

December 15 - Design draft must be completed for presentation to Town Staff and the Windsor Arts Commission

January 5 - Mural painting can begin

March 31 - Mural must be completed

Mural Location



Inspiration Images

