



WINDSOR ARTS COMMISSION REGULAR MEETING

October 21, 2025 - 6:00 PM

Windsor Art & Heritage Center, 116 5th Street, Windsor, CO 80550

AGENDA

A. CALL TO ORDER

1. Roll Call
2. Review of Agenda by the Board and Addition of Items of New Business to the Agenda for Consideration
3. Public Invited to be Heard

B. CONSENT CALENDAR

1. Approval of September Minutes
2. Acceptance of Financial Report

C. BOARD ACTION

1. Approval of final design and budget for Community Development sculpture by Jodie Cooper

2. Site selection for Entryway Sculpture

D. DISCUSSION ITEMS

1. Noble Wins Public Art Benches
2. Update from David Moore on CRC Sculpture

E. COMMUNICATIONS

1. Communications from Town Board Liaison
2. Communications from Town Staff
3. Communications from WAC Members

F. ADJOURN

The Town of Windsor will make reasonable accommodations for access to Town services, programs, and activities and will make special communication arrangements for persons with disabilities. Please call (970) 674-2400 by noon on the Thursday prior to the meeting to make arrangements.



WINDSOR ARTS COMMISSION REGULAR MEETING

September 16, 2025 - 6:00 PM

Windsor Art & Heritage Center, 116 5th Street, Windsor, CO 80550

MINUTES

A. CALL TO ORDER: 6:00 PM

1. Roll Call

Present: Carol Clark, Carrie Ferris, Todd Vess, Kelly Scharlau, Shelley Kawamura, Laurie Bess

Absent: Tiffany Elliot, Emily Pearson

Also Present: Laura Browarny, Ken Symsack, Mayor Julie Cline

2. Review of Agenda by the Board and Addition of Items of New Business to the Agenda for Consideration

Motion: Shelley Kawamura, Second: Kelly Scharlau, Unanimous

3. Public Invited to be Heard

Michelle Vance, WDA, read a public statement of apology for her actions on the evening of March 18, 2025.

B. CONSENT CALENDAR

1. Approval of August Meeting Minutes

2. Acceptance of Financial Report

Motion to accept Consent Calendar: Carrie Ferris, Second: Shelley Kawamura, Unanimous

C. BOARD ACTION

1. Selection of Artist for Community Development Sculpture

Motion to select artist Jodie Cooper's proposal: Todd Vess, Second: Carrie, Unanimous

D. DISCUSSION ITEMS

1. Windsor History Museum Train Depot Mural

E. COMMUNICATIONS

1. Communications from Town Board

2. Communications from Town of Windsor Staff

3. Communications from WAC Members

F. ADJOURN: Motion: Carrie Ferris, Second: Shelley Kawamura

MEETING IS ADJOURNED AT 6:57 PM

Respectfully submitted by Laura Browarny, Culture Supervisor

The Town of Windsor will make reasonable accommodations for access to Town services, programs, and activities and will make special communication arrangements for persons with disabilities. Please call (970) 674-2400 by noon on the Thursday prior to the meeting to make arrangements.

	Community Devo.	General Fund (205)
2025 Budget	\$100,000	\$24,330
SWAG		\$631
CaFE Subscription		\$120
CaFE Call - SoL		\$250
Traffic Box Mural	\$1,750	
Farm Equipment (encl)	\$15,000	
Art LIVE 6/14		\$250
Final Kyger Payment	\$31,000	
SWAG		\$918
Art LIVE 6/20		\$500
SoL concrete 50%	\$5,100	
Art LIVE 7/12		\$300
SoL steel plates	\$1,050	
SWAG		\$1,170
Bronze Maintenance		\$565
CaFE Call - Comm Dev		\$250
SoL concrete 50%	\$5,100	
SoL artist fees	\$10,800	
Mural grants (encumb)	\$10,000	
Art LIVE 8/9		\$400
Artist stipends		\$600
Art LIVE 9/6		\$375
Pelican Repairs	\$3,250	\$3,250
SoL install fees	\$1,462	
Depot Mural (encumbered)		\$3,000
Total Spent	\$84,512	\$12,579
Remaining Budget	\$30,025	\$11,751

6213 Public art advertising and brand-building	\$3,000.00	Marketing and giveaways
6217 Annual fee for Call for Entry platform	\$430.00	Subscription + three calls
6219 Event and meeting Supplies	\$7,500.00	
6253 Maintenance	\$7,500.00	Maintenance and repairs
6253 Artist honoraria	\$900.00	\$150 x 6 artists
6253 ART LIVE! Artists	\$5,000.00	\$1k each for 5 events



Legacy Signage Project

Overview of Process
and
Site Selection

Goals for New Signage

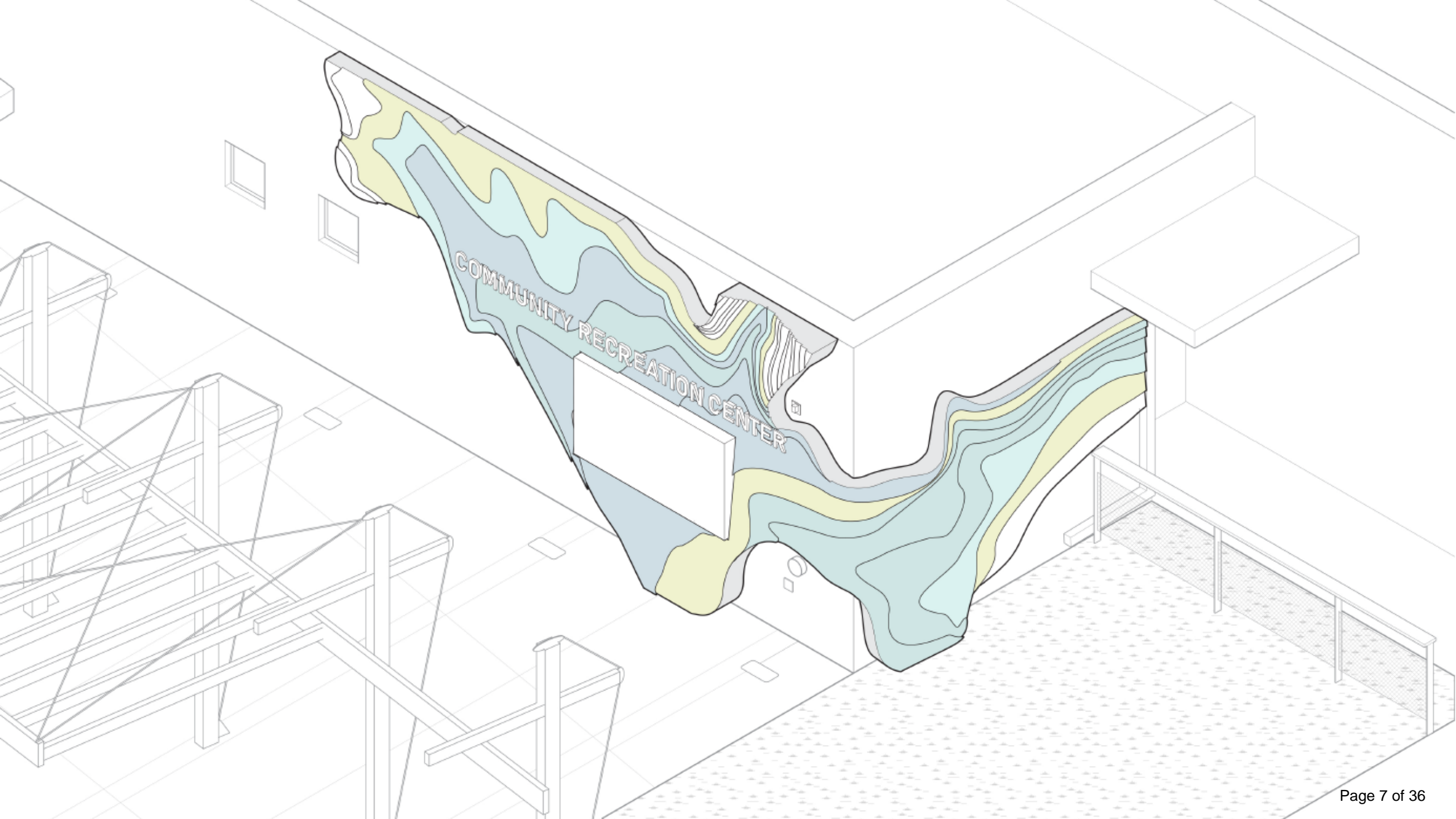
- Create unique and vibrant landmarks
- Add to Windsor's sense of place
- Be consistent across all entryways to the Town
- Make sure that people *know* they are entering the Town of Windsor
- Take into consideration the opinions of Town Board, staff, and community members via the Windsor Arts Commission
- Fulfill goals and action steps from both the Public Art Master Plan and the Town Strategic Plan

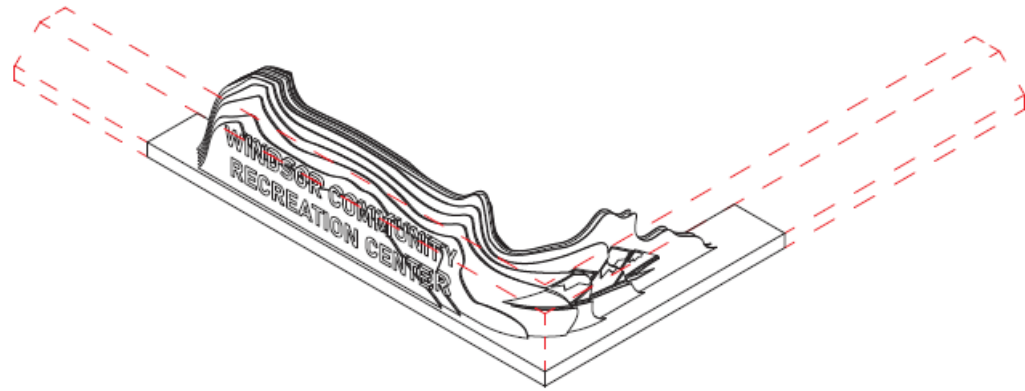


Windsor Arts Commission

1. Post a nation-wide call for proposals
2. Stakeholders review all proposals
3. Town Board will convene with WAC to select 3-5 finalists
4. Finalists will present detailed proposals
5. Town Board will make a recommendation to WAC
6. Culture staff will liaise between artist and staff/contractors



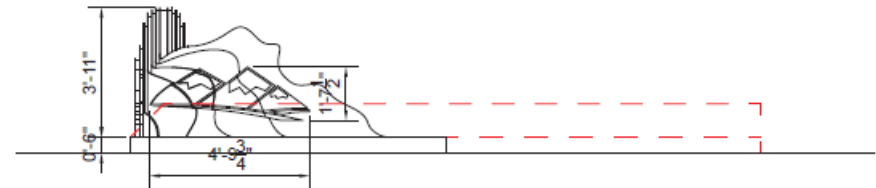




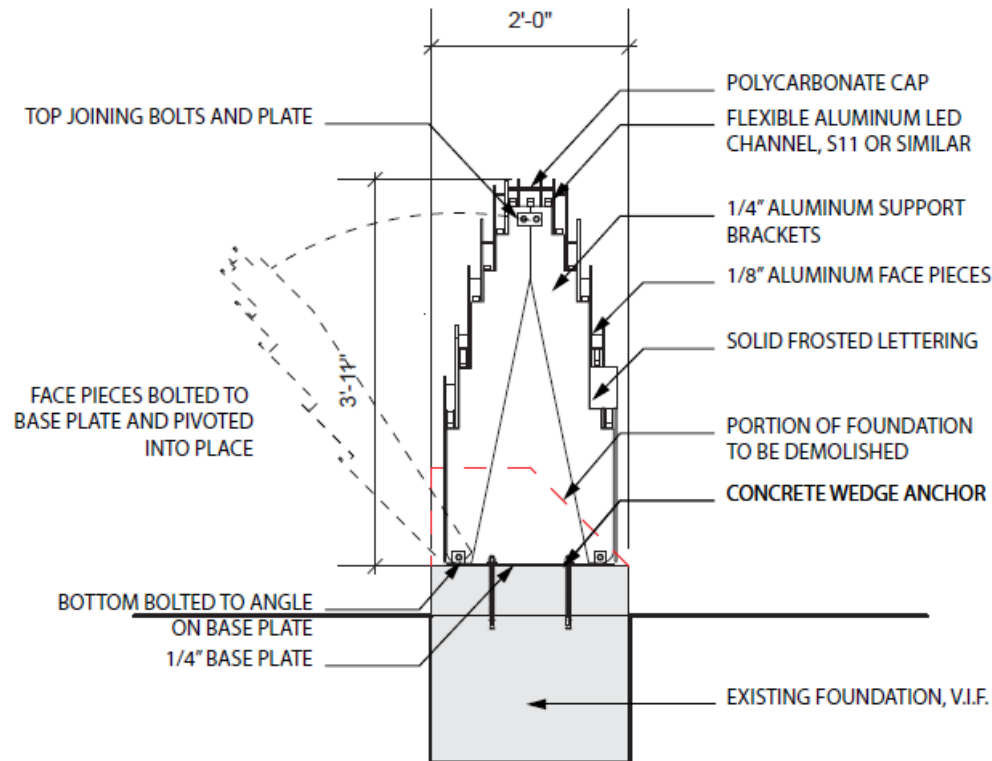
EXISTING SIGNAGE - AXONOMETRIC
N.T.S.



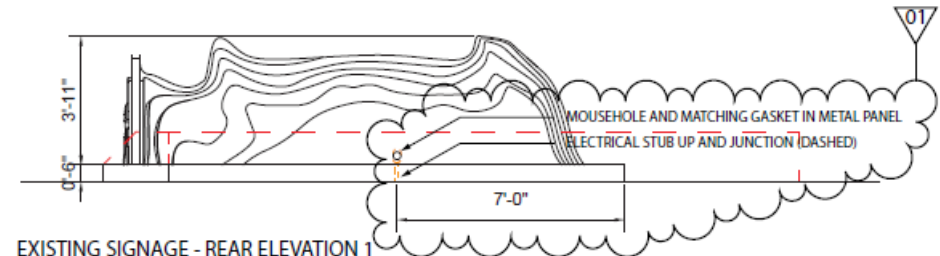
EXISTING SIGNAGE - LEFT ELEVATION
SCALE: 1/4" = 1'-0"



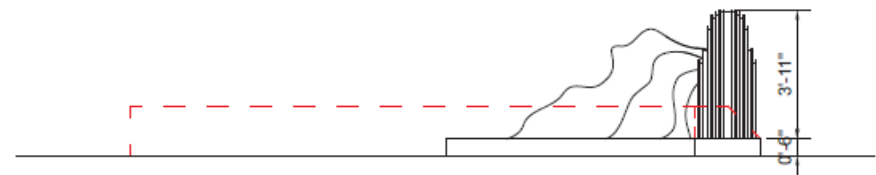
EXISTING SIGNAGE - RIGHT ELEVATION
SCALE: 1/4" = 1'-0"



EXISTING SIGNAGE - DETAIL SECTION
SCALE: 3/4" = 1'-0"

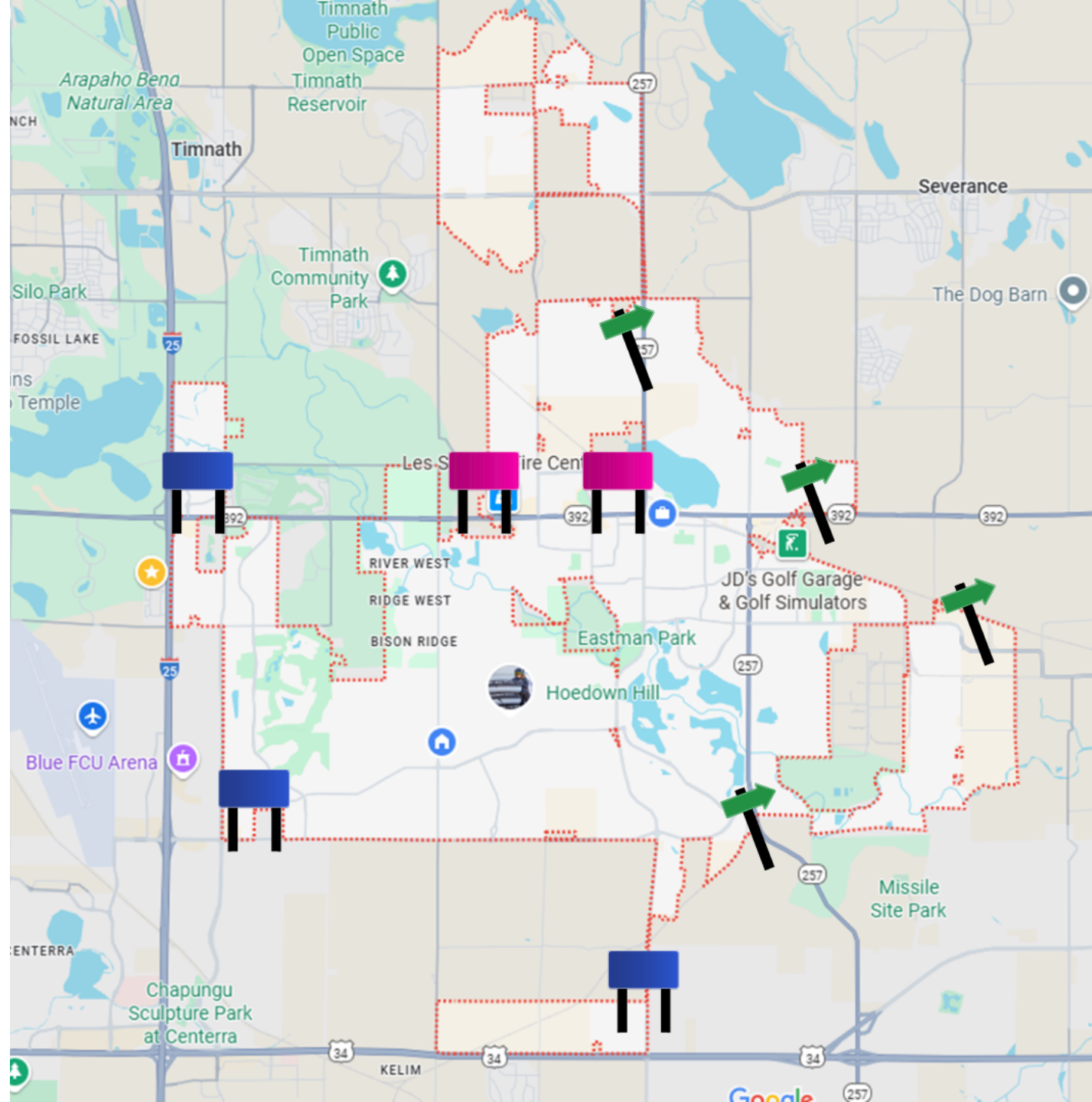


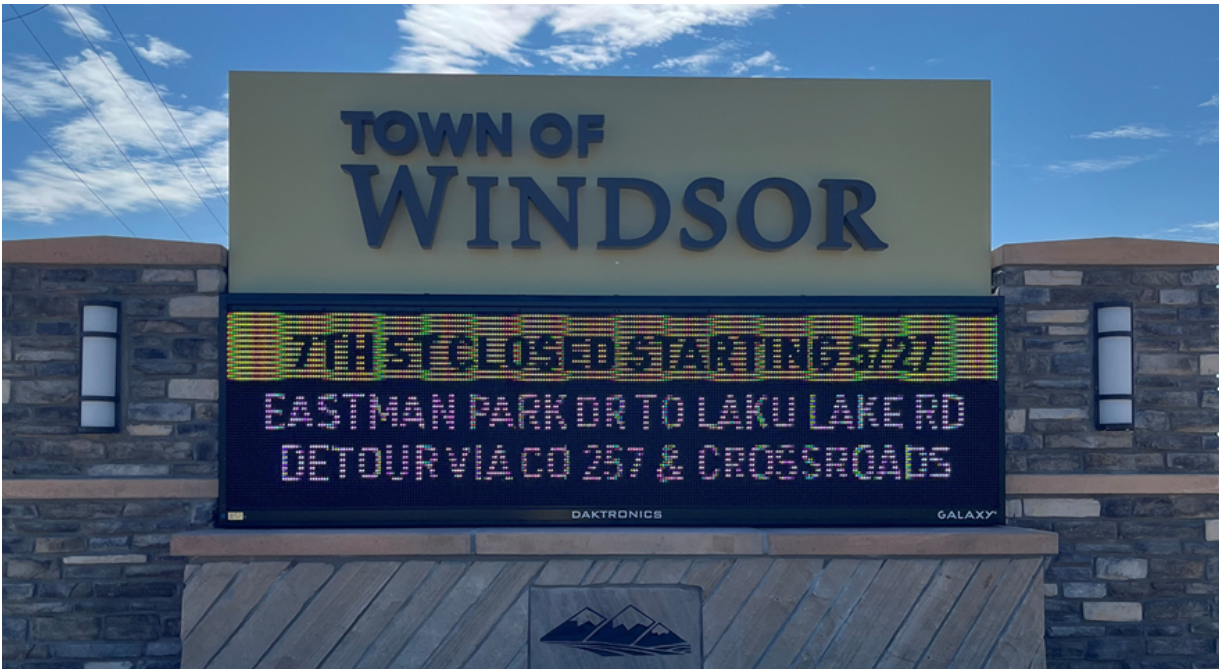
EXISTING SIGNAGE - REAR ELEVATION 1
SCALE: 1/4" = 1'-0"



EXISTING SIGNAGE - REAR ELEVATION 2
SCALE: 1/4" = 1'-0"

Current Entryway Signs

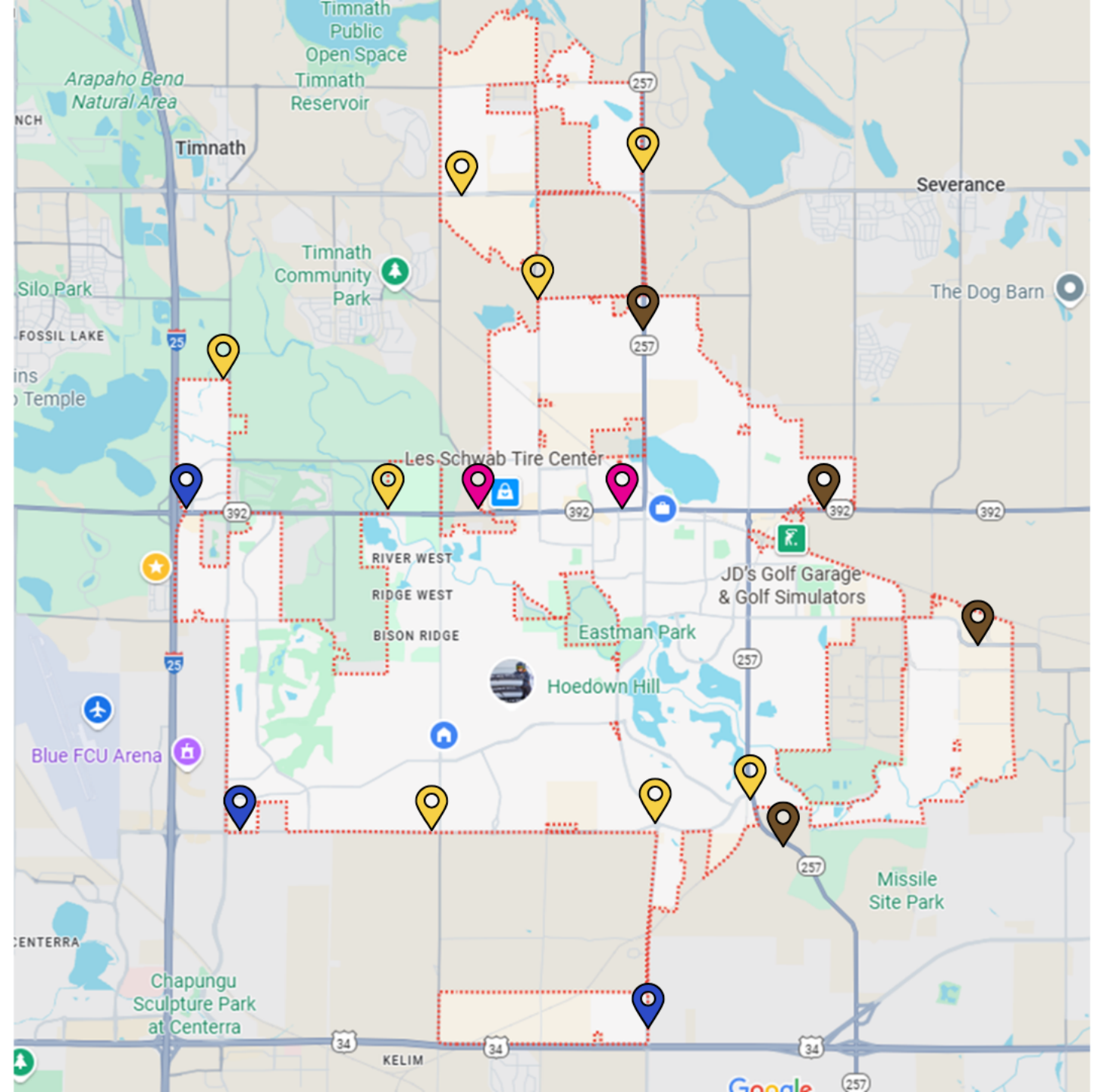




Questions to Answer

- Which entry points are the biggest priority?
- Do we focus on replacing existing signs or adding new?
- Is there Town-owned land near the entry point to install the sign?
- What is the budget per sign?

Possible Sign Locations



Crossroads and 7th Street



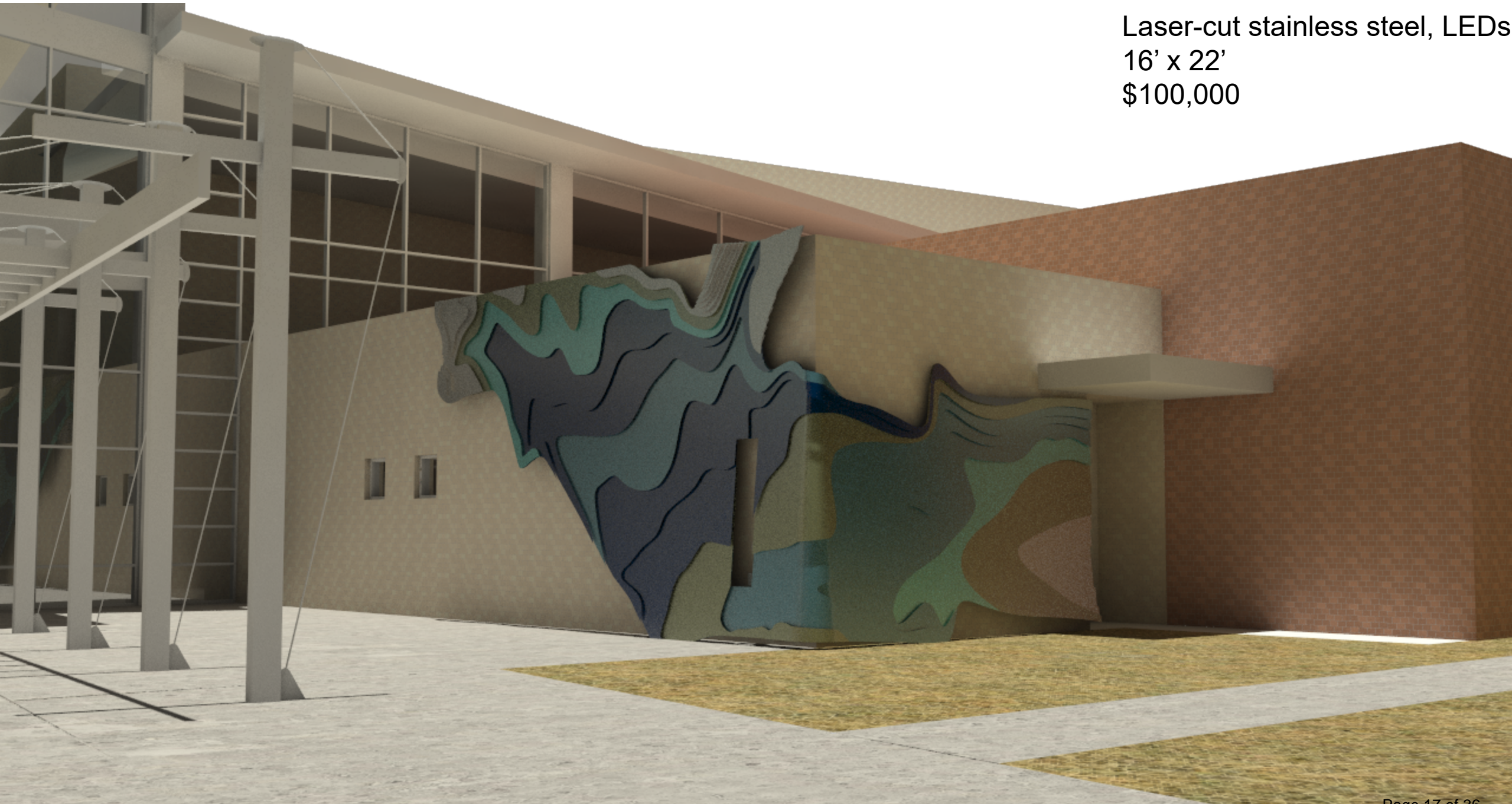
257 at the Archery Range







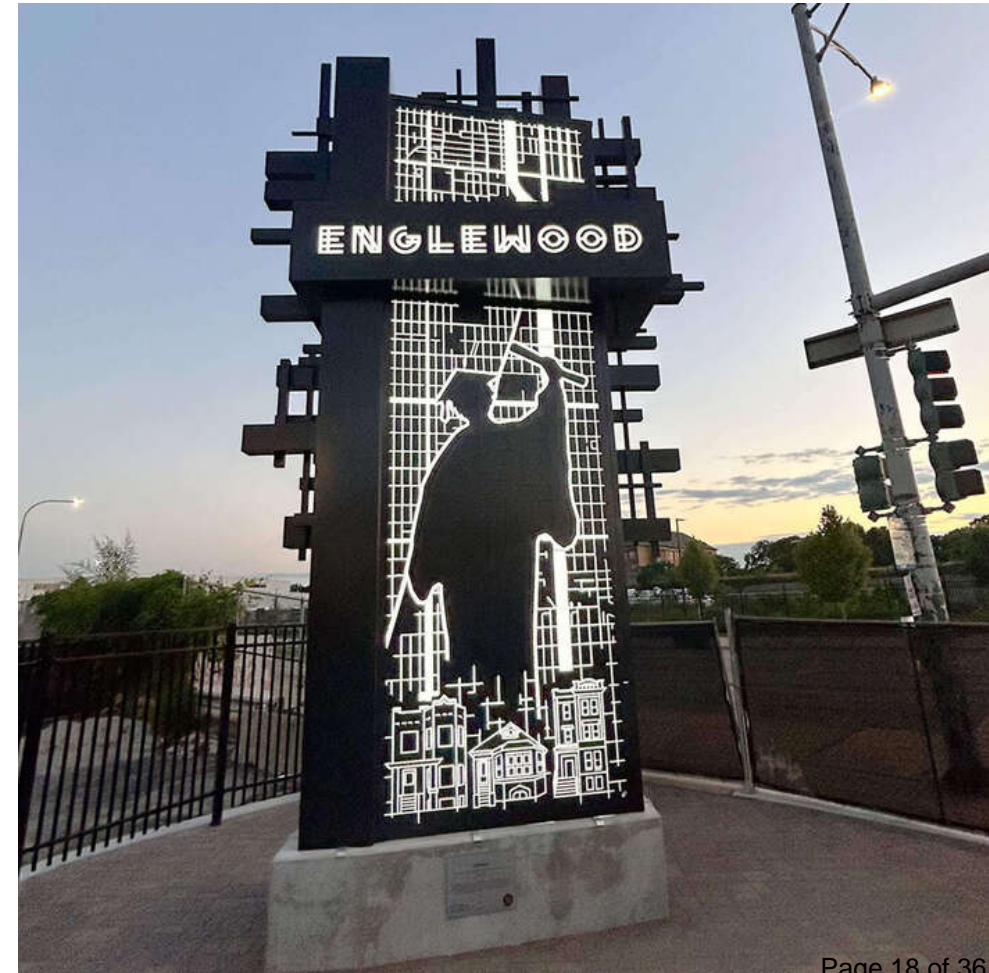
Laser-cut stainless steel, LEDs
16' x 22'
\$100,000



Painted steel
20' x 14' x 14'
\$100,000.00
Lincoln, NE



Plasma cut aluminum, steel & LEDs
25' x 8' x 5'
\$350,000.00
Chicago, IL





747 wing and steel
22' x 16' x 20'
\$200,000.00
2022
College Park, GA



NOBLEWINS
2025 CATALOG





THANK YOU FOR EXPLORING NOBLEWINS.

YOUR TIME AND INTEREST MEAN A LOT TO US. AT NOBLEWINS, WE CRAFT OUTDOOR FURNITURE THAT'S BUILT TO LAST AND DESIGNED TO INSPIRE – BLENDING DURABILITY, ART, AND SUSTAINABILITY INTO EVERY PIECE.

WE BELIEVE OUTDOOR SPACES SHOULD BE AS TIMELESS AS THE MATERIALS WE USE. WHETHER YOU'RE ENVISIONING A BOLD GATHERING SPOT OR ADDING PUBLIC ART TO YOUR COMMUNITY, WE'RE EXCITED TO BE PART OF YOUR JOURNEY.

LET'S CREATE SOMETHING LASTING TOGETHER.





NOBLEWINS

PRIMARY MATERIAL



RETIRED WIND TURBINE BLADE

MATERIAL BENEFITS

- INCREDIBLY DURABLE
- NO MAINTENANCE
- NO RUST OR CORROSION
- MOISTURE RESISTANT
- EXTREME WEATHER? NO PROBLEM
- VISIBLE WAY TO "GO GREEN"



SECONDARY MATERIALS



UPCYCLED PVC

A SUSTAINABLE, LOW-MAINTENANCE FINISH THAT MIMICS NATURAL WOOD. WILL NOT SPLINTER, WARP OR FADE.



ALUMINUM FRAMES

LIGHTWEIGHT, RUST-RESISTANT, AND BUILT TO PROVIDE LASTING STRUCTURAL SUPPORT IN ANY ENVIRONMENT



STAINLESS STEEL FASTENERS

CORROSION-RESISTANT AND BUILT TO WITHSTAND THE HARSHTEST OUTDOOR CONDITIONS FOR LASTING STRENGTH AND STABILITY



NOBLEWINS

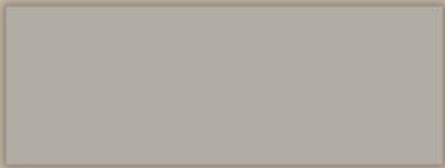
FINISHES

WE COMPLETE EACH PIECE WITH AN ANTI-GRAFFITI FINISH, USING A TWO-PART EPOXY PAINT DESIGNED TO WITHSTAND HARSH ENVIRONMENTS.



PRIMED

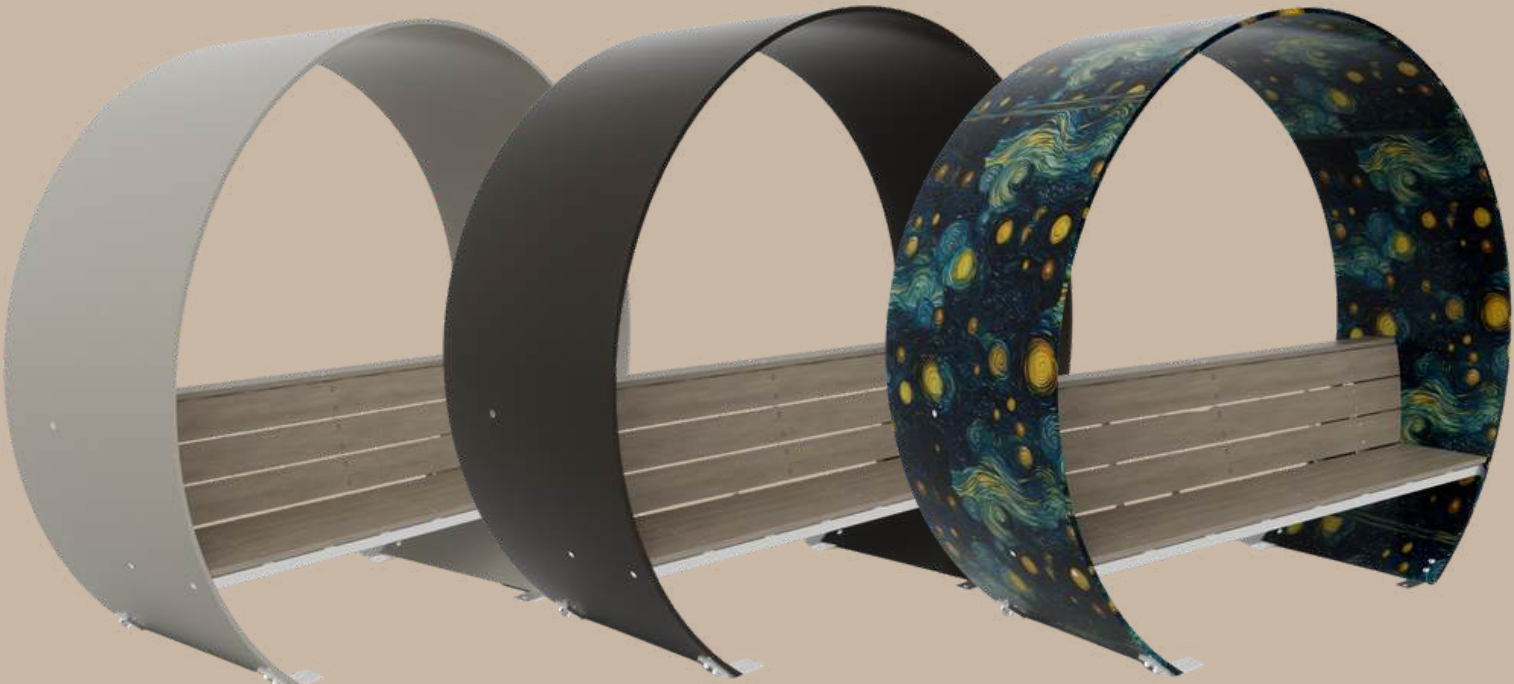
A BLANK CANVAS THAT JUMPSTARTS PUBLIC ART, INVITES COMMUNITY CREATIVITY, AND BRINGS LOCAL STORIES TO LIFE



STONE
LIGHT BEIGE, SUBTLE
AND INVITING



TIMBER
RICH BROWN, WARM
AND TIMELESS





NOBLEWINS

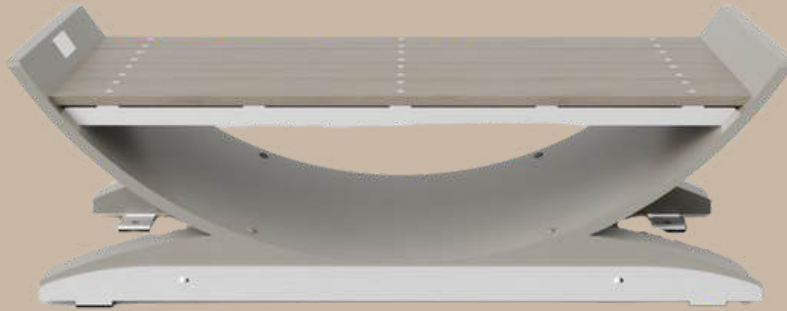
PRIMED PROJECTS

EMPOWER YOUR COMMUNITY. TURN YOUR SPACES INTO STATEMENTS.



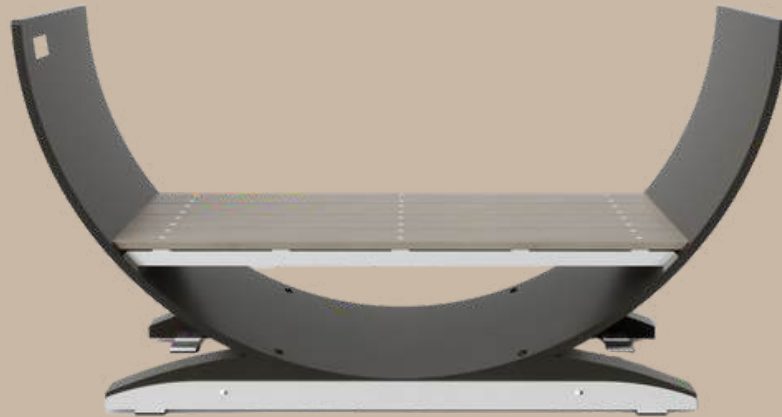


YOSEMITE
\$3,775



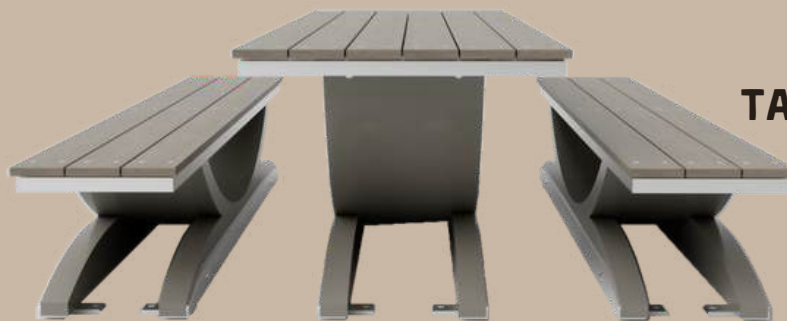
WIDTH: 60-72"
DEPTH: 24"
HEIGHT: 21"
SEAT HEIGHT: 18"
WEIGHT: 400 LBS

BIG BEND
\$3,975



WIDTH: 72-84"
DEPTH: 24"
HEIGHT: 40"
SEAT HEIGHT: 18"
WEIGHT: 400 LBS

ZIÖN
\$12,475



WIDTH: 8'
TABLE DEPTH: 40"
TABLE HEIGHT: 32.5"
SEAT DEPTH: 17"
SEAT HEIGHT: 18"
WEIGHT: 850 LBS

SEQUOIA
\$4,975



WIDTH: 72-84"
DEPTH: 30"
HEIGHT: 40"
SEAT HEIGHT: 18"
WEIGHT: 1200 LBS



YOSEMITE

\$3,775

WIDTH: 60-72"

DEPTH: 24"

HEIGHT: 21"

SEAT HEIGHT: 18"

WEIGHT: 400 LBS



BIG BEND

\$3,975

WIDTH: 60-72"

DEPTH: 24"

HEIGHT: 40"

SEAT HEIGHT: 18"

WEIGHT: 400 LBS

ZIÖN

\$12,475



WIDTH: 8'

TABLE DEPTH: 40"

TABLE HEIGHT: 32.5"

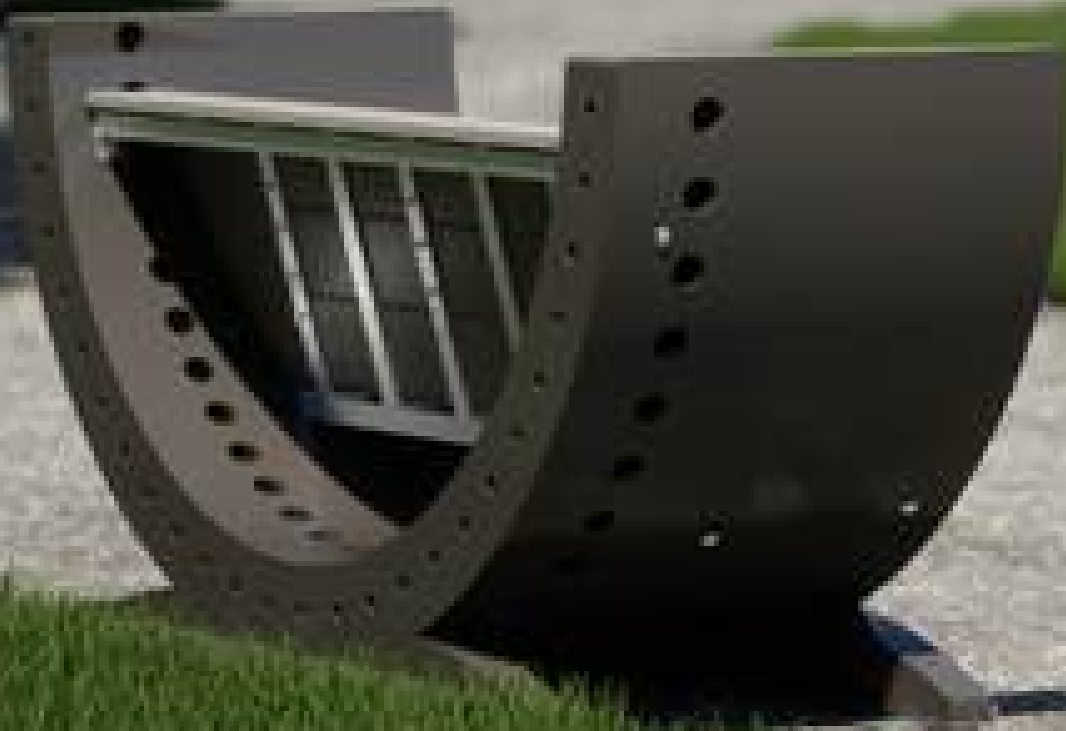
SEAT DEPTH: 17"

SEAT HEIGHT: 18"

WEIGHT: 850 LB.

SEQUOIA

\$4,975



WIDTH: 72-84"

DEPTH: 30"

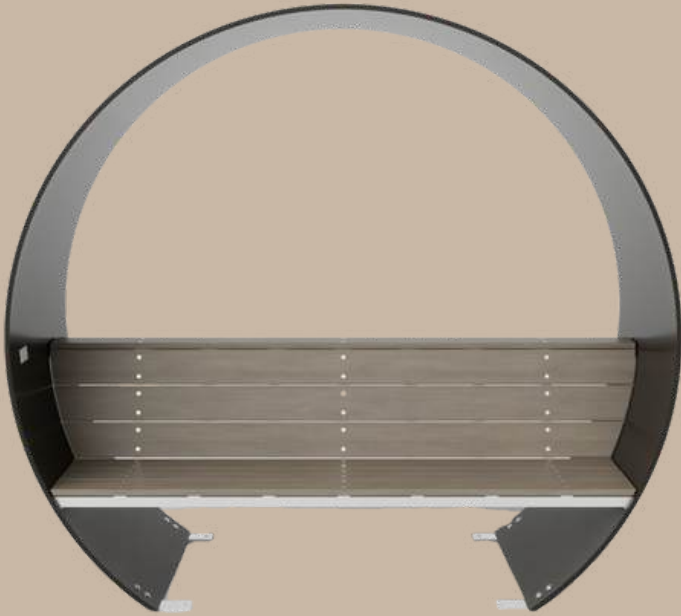
HEIGHT: 40"

SEAT HEIGHT: 18"

WEIGHT: 1200 LBS



ARCH
\$8,475



SEAT HEIGHT: 18"
SEAT WIDTH: 77"
WEIGHT: 2000 LBS
WIDTH: 90-96"
DEPTH: 36"
HEIGHT: 80-86"

EVERGLADE
\$8,475



SEAT HEIGHT: 18"
SEAT WIDTH: 48"
WEIGHT: 2000 LBS
WIDTH: 90-96"
DEPTH: 36"
HEIGHT: 80-86"

ACADIA
\$6,495

LIMITED SUPPLY
PRIMED ONLY



WIDTH: 50-70"
DEPTH: 30"
HEIGHT: 91-112"
SEAT HEIGHT: 18"
WEIGHT: 550-650 LBS



ARCH

\$8,475

WIDTH: 90-96"

DEPTH: 36"

HEIGHT: 80-86"

SEAT HEIGHT: 18"

SEAT WIDTH: 77"

WEIGHT: 2000 LBS

EVERGLADE

\$8,475



WIDTH: 90-96"

DEPTH: 36"

HEIGHT: 80-86"

SEAT HEIGHT: 18"

SEAT WIDTH: 48"

WEIGHT: 2000 LBS

ACADIA

\$6,495



WIDTH: 50-70"

DEPTH: 30"

HEIGHT: 91-112"

SEAT HEIGHT: 18"

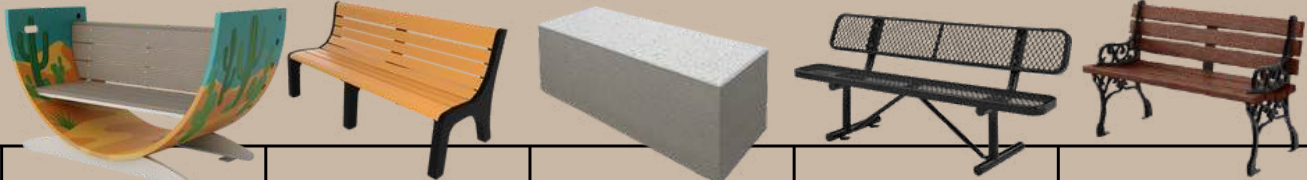
WEIGHT: 550-650 LBS

**LIMITED SUPPLY
PRIMED FINISH ONLY**



COST COMPARISON

What Will Your Bench Cost Over 25 Years?



Feature	NOBLEWINS	Composite Wood	Concrete	Metal	Traditional Wood
Average Cost	\$6,000	\$3,000	\$5,000	\$3,500	\$2,000
Maintenance Cost	\$0	\$250/year	\$240/year	\$320/year	\$520/year
Replacement Cycle	None	2x	2x	2-3x	3x
Total 25-Year Cost	\$6,000	\$9,250	\$11,000	\$11,500	\$15,000

WHY CHOOSE NOBLEWINS

- Lowest Total Cost – No maintenance or replacements needed over 25 years
- No Assembly Required – Delivered fully built and ready to install
- Durability That Lasts – Built to withstand the elements and heavy use
- Outperforms Traditional Options – Replaces 2-3 wood, metal, or concrete benches
- Public Art Ready – Custom-painted options turn seating into lasting community art
- Sustainable Choice – Made from upcycled wind turbine blades



PURCHASING INFO

- **SOLE SOURCE SUPPLIER**
- **MADE TO ORDER**
- **LIMITED PRODUCTION SLOTS**
- **LEAD TIME: 3-6 MONTHS**
- **ORDER PROCESS**
 - **APPROVE QUOTE**
 - **INVOICE ISSUED**
 - **PRODUCTION BEGINS UPON PAYMENT**



**CRAFTED WITH PURPOSE.
BUILT TO LAST.
DESIGNED TO INSPIRE.**



NOBLEWINS

READY TO BRING YOUR VISION TO LIFE?

(440) 306-9006

INFO@NOBLEWINS.COM